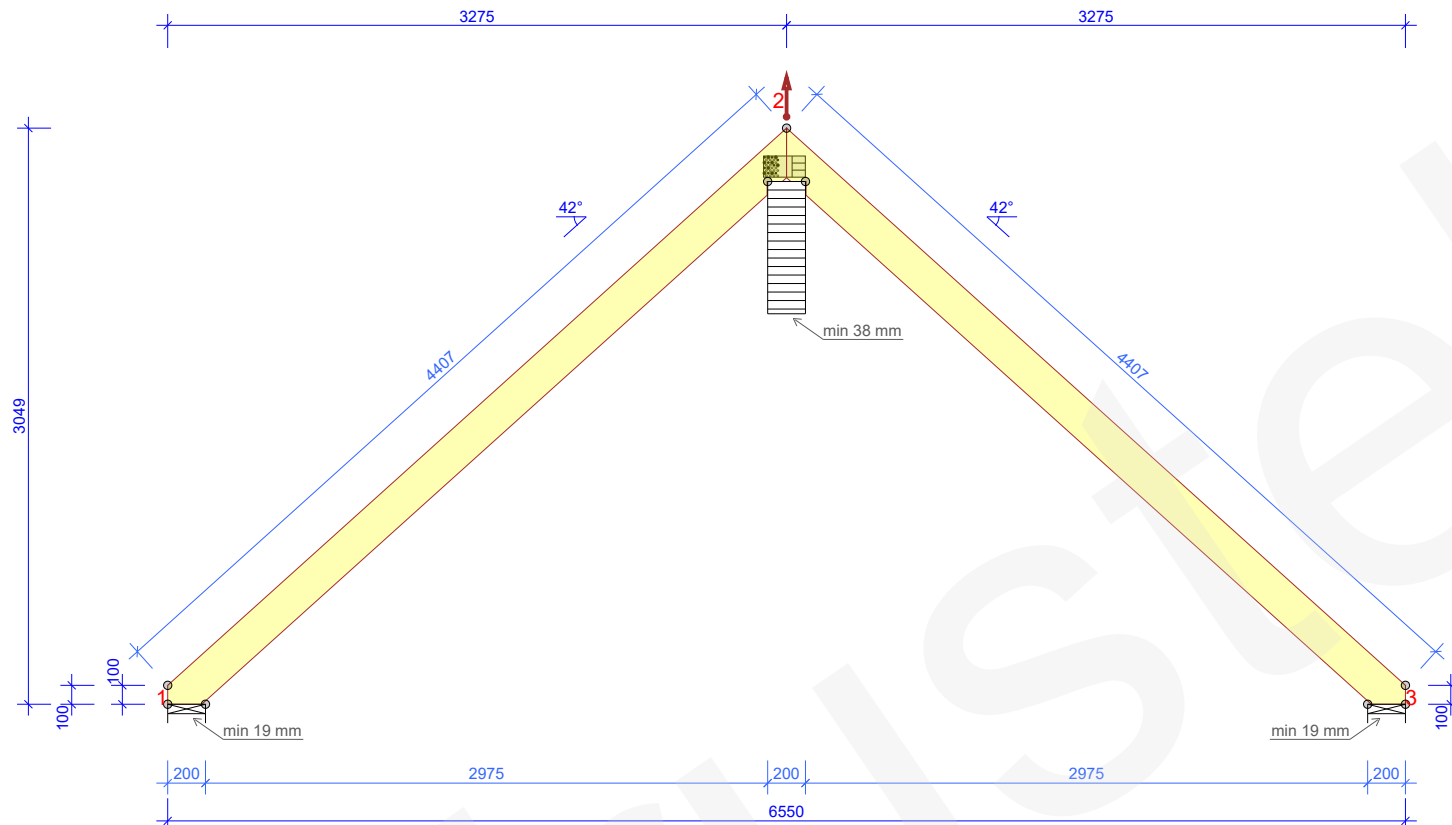


BRACINGS ACCORDING TO TIMBER TABLE AND STABILITY OF THE TRUSS SYSTEM SHALL BE DESIGNED SEPARATELY
NB! REDUCTIONS HAVE BEEN PERFORMED



THE STRUCTURE HAS BEEN CALCULATED USING
COMPUTER PROGRAM "MITEK PAMIR",
OU Trustek_EE1 - LICENSE: 15421
DESIGN CODE: EN 1995-1-1:2004 + A2:2014 + EE NA:2007 +
A1:2008 + EE NA:2009
FULL DESIGN RESULTS AS PER CALC. PRINTOUT

| | |
|---|---------------------|
| TIMBER THICKNESS (mm): | 45 |
| TRUSS WEIGHT (kg/ply): | 37 |
| TRUSS CENTRES (mm): | 600 |
| LOAD SHARING FACTOR: | 1.1 |
| SERVICE CLASS: | 2 = 65% <= RH < 85% |
| THE TRUSS PLANT IS CONTROLLED BY : | |
| NCS Estonia OÜ | |
| PRODUCT CERTIFICATE: 2866 - CPR - 2866-CPR-0017 | |
| BRACING: SEE TIMBER TABLE | |

| | |
|-----------------------|------|
| SNOW ZONE: | 1.5 |
| SNOW LOAD (Sk): | 1500 |
| WIND LOAD (qp(z)): | 644 |
| DEAD LOAD ON ROOF: | 550 |
| DEAD LOAD ON CEILING: | 350 |
| SELF-WEIGHT ADDED | |

| JOINT NO | DIR. | LC P/L MAX | LC M MAX | LC S MAX | LC I MAX | LC I MIN | S-W mm |
|----------|------|------------|----------|----------|----------|----------|--------|
| 1 | HOR. | 0 | 0 | -1519 | 0 | - | |
| 1 | VER. | 1599 | 3162 | 3691 | 0 | 0 | 19 |
| 2 | VER. | 3458 | 6705 | 7349 | 0 | 0 | 38 |
| 3 | VER. | 1599 | 3171 | 3838 | 0 | 0 | 19 |


| JOINT NO | VER. | HOR. | LC NO. |
|----------|------|------|----------------------------|
| 2-3 | 9.6 | -8.2 | 1001:2:6 (WFIN (FREQUENT)) |
| 1-2 | 9.3 | 8.3 | 1001:1:6 (WFIN (FREQUENT)) |
| 3 | -0.8 | 1.2 | 1002:6 (WFIN (FREQUENT)) |

FOR DEFLECTIONS AT OTHER POINTS - SEE CALC. PRINTOUT

[illegible]

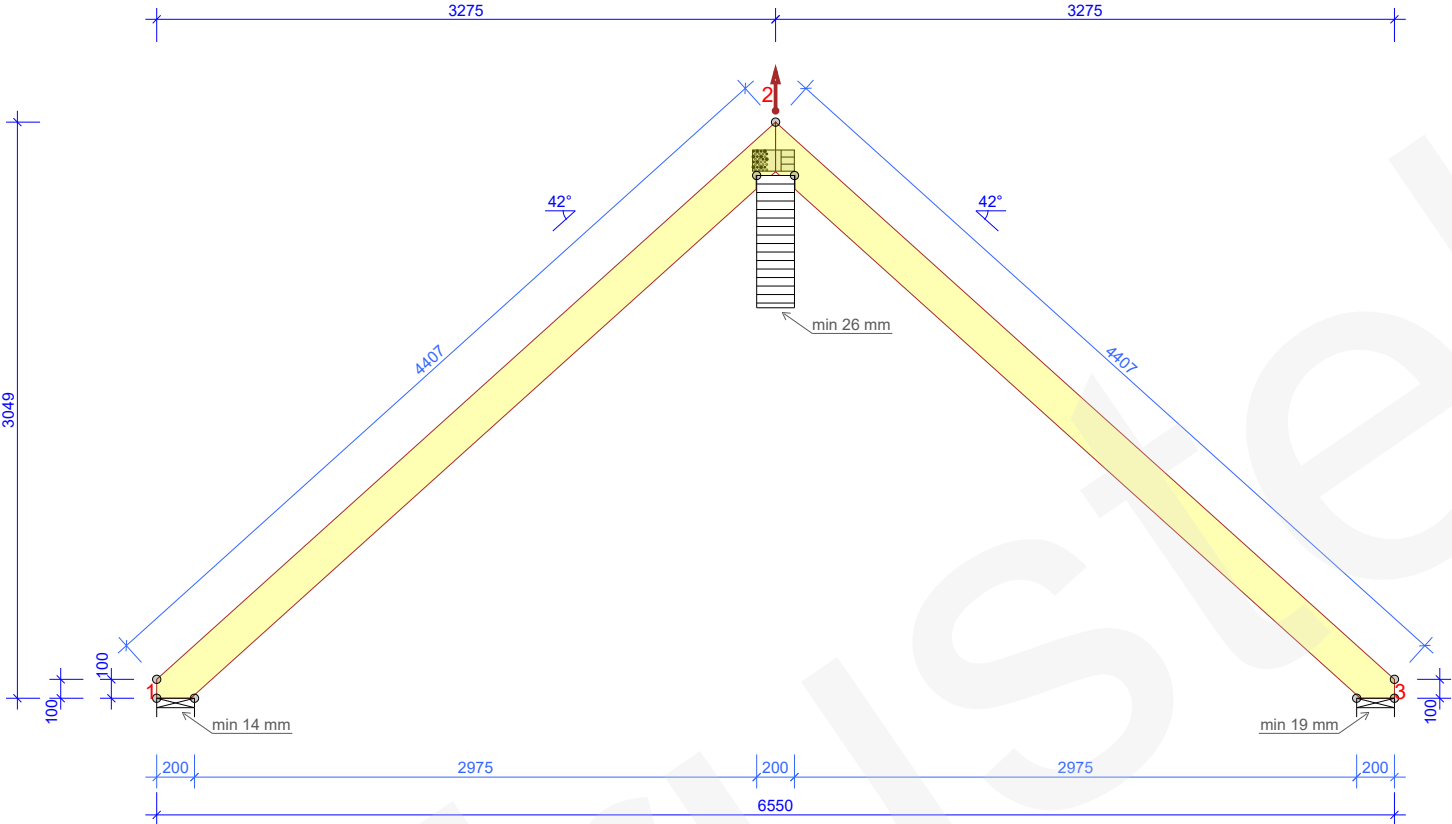
| FASTENERS - SPICES EXCL | | | | |
|-------------------------|---------------|-------------|--------------|----------|
| JOINT NO | PLATE TYPE | WIDTH mm | LENGTH mm | CSI % |
| 2 | GNT150S-K | 112 | 221 | 92 |

| FASTENERS - SPLICES | | | | |
|---------------------|---------------|-------------|--------------|----------|
| JOINT NO | PLATE TYPE | WIDTH mm | LENGTH mm | CSI % |
| | | | | |

| | | | | | | | |
|---|-----|--|--|------------------|--|--------------------------|--|
|  | | | | Customer: | | Project no: 119425TTC | |
| | | | | Project name: | | Mark: T1 | |
| | | | | Project address: | | Revision: | |
| | | | | Page name: | | Page no: 1/4 | |
| Designer | S.K | | | | | Scale: 1:40 | |
| Supervisor | | | | | | Date: | |
| Main engineer | | | | | | Page no: | |
| Cert. no. | | | | | | 04/07/2025 | |

T1.1b - 1 no. 2-ply

BRACINGS ACCORDING TO TIMBER TABLE AND STABILITY OF THE TRUSS SYSTEM SHALL BE DESIGNED SEPARATELY
NB! REDUCTIONS HAVE BEEN PERFORMED



GENERAL DIRECTIONS

THE STRUCTURE HAS BEEN CALCULATED USING
COMPUTER PROGRAM "MITEK PAMIR",
OU Trustek_EE1 - LICENSE: 15421
DESIGN CODE: EN 1995-1-1:2004 + A2:2014 + EE NA:2007 +
A1:2008 + EE NA:2009
FULL DESIGN RESULTS AS PER CALC. PRINTOUT

GENERAL SETTINGS

TIMBER THICKNESS (mm): 45
TRUSS WEIGHT (kg/ply): 37
MAXIMUM HANDLING WEIGHT (kg): 74
TRUSS CENTRES (mm): 730
LOAD SHARING FACTOR: 1.1
SERVICE CLASS: 2 = 65% <= RH < 85%
THE TRUSS PLANT IS CONTROLLED BY :
NCS Estonia OÜ
PRODUCT CERTIFICATE: 2866 - CPR - 2866-CPR-0017
BRACING: SEE TIMBER TABLE

LOADS (N/m²)

SNOW ZONE: 1.5
SNOW LOAD (Sk): 1500
WIND LOAD (qp(z)): 644
DEAD LOAD ON ROOF: 550
DEAD LOAD ON CEILING: 350
OTHER LOADS AS PER CALC. PRINT-OUT
SELF-WEIGHT ADDED

SUPPORT REACTIONS (N) (ULTIMATE)

| JOINT NO | DIR. | LC P/L MAX | LC M MAX | LC S MAX | LC I MAX | LC I MIN | S-W mm |
|----------|------|------------|----------|----------|----------|----------|--------|
| 1 | HOR. | 0 | 0 | -1760 | 0 | - | |
| 1 | VER. | 2058 | 3962 | 4511 | 0 | 0 | 12 |
| 2 | VER. | 4679 | 9038 | 9883 | 0 | 0 | 26 |
| 3 | VER. | 2624 | 5299 | 6111 | 0 | 0 | 16 |

MAX DEFLECTION (mm) (SERVICEABILITY)

| JOINT NO | VER. | HOR. | LC NO. |
|----------|------|------|----------------------------|
| 2-3 | 8.4 | -7.1 | 1001:2:6 (WFIN (FREQUENT)) |
| 1-2 | 6 | 5.4 | 1001:1:6 (WFIN (FREQUENT)) |
| 3 | -0.7 | 1.1 | 1002:6 (WFIN (FREQUENT)) |

FOR DEFLECTIONS AT OTHER POINTS - SEE CALC. PRINTOUT


| TIMBER | | THICKNESS 45 mm | | 2 NO. OF PLY | |
|----------------|-------------|-----------------|--|-------------------|----------|
| JOINT FR-TO | DEPTH mm | GRADE | | BRACING mm/no. | CSI % |
| 1-2 | 195 | C24 | | 350 | 34 |
| 2-3 | 195 | C24 | | 350 | 44 |
| | | | | | |
| | | | | | |
| | | | | | |
| | | | | | |
| | | | | | |
| | | | | | |
| | | | | | |
| | | | | | |
| | | | | | |
| | | | | | |
| | | | | | |
| | | | | | |
| | | | | | |
| | | | | | |
| | | | | | |
| | | | | | |
| | | | | | |
| | | | | | |
| | | | | | |
| | | | | | |
| | | | | | |
| | | | | | |
| | | | | | |
| | | | | | |
| | | | | | |
| | | | | | |
| | | | | | |
| | | | | | |
| | | | | | |
| | | | | | |
| | | | | | |
| | | | | | |
| | | | | | |
| | | | | | |
| | | | | | |
| | | | | | |
| | | | | | |
| | | | | | |
| | | | | | |
| | | | | | |
| | | | | | |
| | | | | | |
| | | | | | |
| | | | | | |
| | | | | | |
| | | | | | |
| | | | | | |
| | | | | | |
| | | | | | |
| | | | | | |
| | | | | | |
| | | | | | |
| | | | | | |
| | | | | | |
| | | | | | |
| | | | | | |
| | | | | | |
| | | | | | |
| | | | | | |
| | | | | | |
| | | | | | |
| | | | | | |
| | | | | | |
| | | | | | |
| | | | | | |
| | | | | | |
| | | | | | |
| | | | | | |
| | | | | | |
| | | | | | |
| | | | | | |
| | | | | | |
| | | | | | |
| | | | | | |
| | | | | | |
| | | | | | |
| | | | | | |
| | | | | | |
| | | | | | |
| | | | | | |
| | | | | | |
| | | | | | |
| | | | | | |
| | | | | | |
| | | | | | |
| | | | | | |
| | | | | | |
| | | | | | |
| | | | | | |
| | | | | | |
| | | | | | |
| | | | | | |
| | | | | | |
| | | | | | |
| | | | | | |
| | | | | | |
| | | | | | |
| | | | | | |
| | | | | | |
| | | | | | |
| | | | | | |
| | | | | | |
| | | | | | |
| | | | | | |
| | | | | | |
| | | | | | |
| | | | | | |
| | | | | | |
| | | | | | |
| | | | | | |
| | | | | | |
| | | | | | |
| | | | | | |
| | | | | | |
| | | | | | |
| | | | | | |
| | | | | | |
| | | | | | |
| | | | | | |
| | | | | | |
| | | | | | |
| | | | | | |
| | | | | | |
| | | | | | |
| | | | | | |
| | | | | | |
| | | | | | |
| | | | | | |
| | | | | | |
| | | | | | |
| | | | | | |
| | | | | | |
| | | | | | |
| | | | | | |
| | | | | | |
| | | | | | |
| | | | | | |
| | | | | | |
| | | | | | |
| | | | | | |
| | | | | | |
| | | | | | |
| | | | | | |
| | | | | | |
| | | | | | |
| | | | | | |
| | | | | | |
| | | | | | |
| | | | | | |
| | | | | | |
| | | | | | |
| | | | | | |
| | | | | | |
| | | | | | |
| | | | | | |
| | | | | | |
| | | | | | |
| | | | | | |
| | | | | | |
| | | | | | |
| | | | | | |
| | | | | | |
| | | | | | |
| | | | | | |
| | | | | | |
| | | | | | |
| | | | | | |
| | | | | | |
| | | | | | |
| | | | | | |
| | | | | | |
| | | | | | |
| | | | | | |
| | | | | | |
| | | | | | |
| | | | | | |
| | | | | | |
| | | | | | |
| | | | | | |
| | | | | | |
| | | | | | |
| | | | | | |
| | | | | | |
| | | | | | |
| | | | | | |
| | | | | | |
| | | | | | |
| | | | | | |
| | | | | | |
| | </ | | | | |

| FASTENERS - SPLICES EXCL | | | | |
|--------------------------|------------|----------|-----------|-------|
| JOINT NO | PLATE TYPE | WIDTH mm | LENGTH mm | CSI % |
| 2 | GNT150S-K | 112 | 221 | 83 |

FASTENER LOCATION TOLERANCE: 8 mm

| FASTENERS - SPLICES | | | | |
|---------------------|------------|----------|-----------|-------|
| JOINT NO | PLATE TYPE | WIDTH mm | LENGTH mm | CSI % |
| | | | | |
| | | | | |
| | | | | |

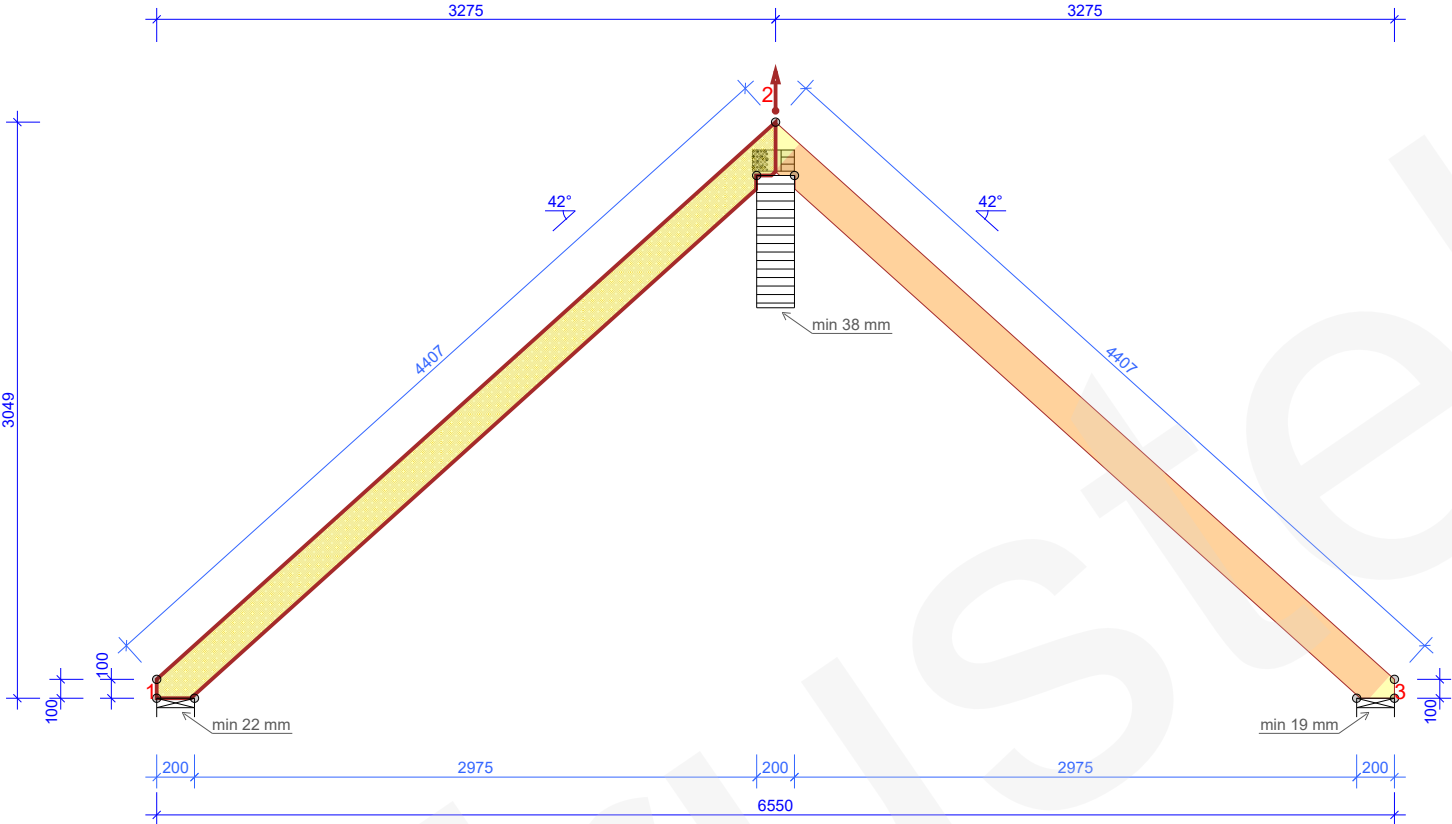
© The drawing is protected under copyright law and may not be copied, distributed or otherwise used without the author's consent.

| | | | | | |
|---|-----|------------------|--|-------------|------------|
|  | | Customer: | | Project no: | |
| | | Project name: | | 119425TTC | |
| | | Project address: | | Mark: | |
| | | Page name: | | Revision: | |
| Designer | S.K | | | Page no: | 2/4 |
| Supervisor | | | | Scale: | 1:40 |
| Main engineer | | | | Date: | 04/07/2025 |
| Cert. no | | | | Page no: | |

04/07/2025 - 08:39
2025.2 (28542df)

T1.2c - 2 no. 1-ply

BRACINGS ACCORDING TO TIMBER TABLE AND STABILITY OF THE TRUSS SYSTEM SHALL BE DESIGNED SEPARATELY
NB! REDUCTIONS HAVE BEEN PERFORMED



GENERAL DIRECTIONS

THE STRUCTURE HAS BEEN CALCULATED USING
COMPUTER PROGRAM "MITEK PAMIR",
OU Trustek_EE1 - LICENSE: 15421
DESIGN CODE: EN 1995-1-1:2004 + A2:2014 + EE NA:2007 +
A1:2008 + EE NA:2009
FULL DESIGN RESULTS AS PER CALC. PRINTOUT

GENERAL SETTINGS

TIMBER THICKNESS (mm): 45
TRUSS WEIGHT (kg/ply): 56
TRUSS CENTRES (mm): 600
LOAD SHARING FACTOR: 1.1
SERVICE CLASS: 2 = 65% <= RH < 85%
THE TRUSS PLANT IS CONTROLLED BY :
NCS Estonia OÜ
PRODUCT CERTIFICATE: 2866 - CPR - 2866-CPR-0017
BRACING: SEE TIMBER TABLE

LOADS (N/m²)

SNOW ZONE: 1.5
SNOW LOAD (Sk): 1500
WIND LOAD (qp(z)): 644
DEAD LOAD ON ROOF: 550
DEAD LOAD ON CEILING: 350
OTHER LOADS AS PER CALC. PRINT-OUT
SELF-WEIGHT ADDED

SUPPORT REACTIONS (N) (ULTIMATE)

| JOINT NO | DIR. | LC P/L MAX | LC M MAX | LC S MAX | LC I MIN | LC I MAX | S-W mm |
|----------|------|------------|----------|----------|----------|----------|--------|
| 1 | HOR. | 0 | 0 | 1443 | 0 | - | |
| 1 | VER. | 2327 | 4664 | 5372 | 0 | 0 | 22 |
| 2 | VER. | 3955 | 7688 | 8343 | 0 | 0 | 38 |
| 3 | VER. | 1606 | 3167 | 3811 | 0 | 0 | 19 |

MAX DEFLECTION (mm) (SERVICEABILITY)

| JOINT NO | VER. | HOR. | LC NO. |
|----------|------|------|----------------------------|
| 2-3 | 9.6 | -7.9 | 1001:2:6 (WFIN (FREQUENT)) |
| 1-2 | 7.3 | 6.8 | 1001:1:6 (WFIN (FREQUENT)) |
| 3 | -0.8 | 1.5 | 1002:6 (WFIN (FREQUENT)) |

FOR DEFLECTIONS AT OTHER POINTS - SEE CALC. PRINTOUT


| TIMBER THICKNESS 45 mm | | | | |
|------------------------|----------|-------|----------------|-------|
| JOINT FR-TO | DEPTH mm | GRADE | BRACING mm/no. | CSI % |
| 1-2 | 195 | C24 | 350 | 42 |
| 2-3 | 195 | C24 | 350 | 55 |
| 1-2 | 1x45x195 | C24 | NONE | 39 |

| FASTENERS - SPLICES EXCL | | | | |
|--------------------------|------------|----------|-----------|-------|
| JOINT NO | PLATE TYPE | WIDTH mm | LENGTH mm | CSI % |
| 2 | GNT150S-K | 112 | 221 | 85 |

FASTENER LOCATION TOLERANCE: 8 mm

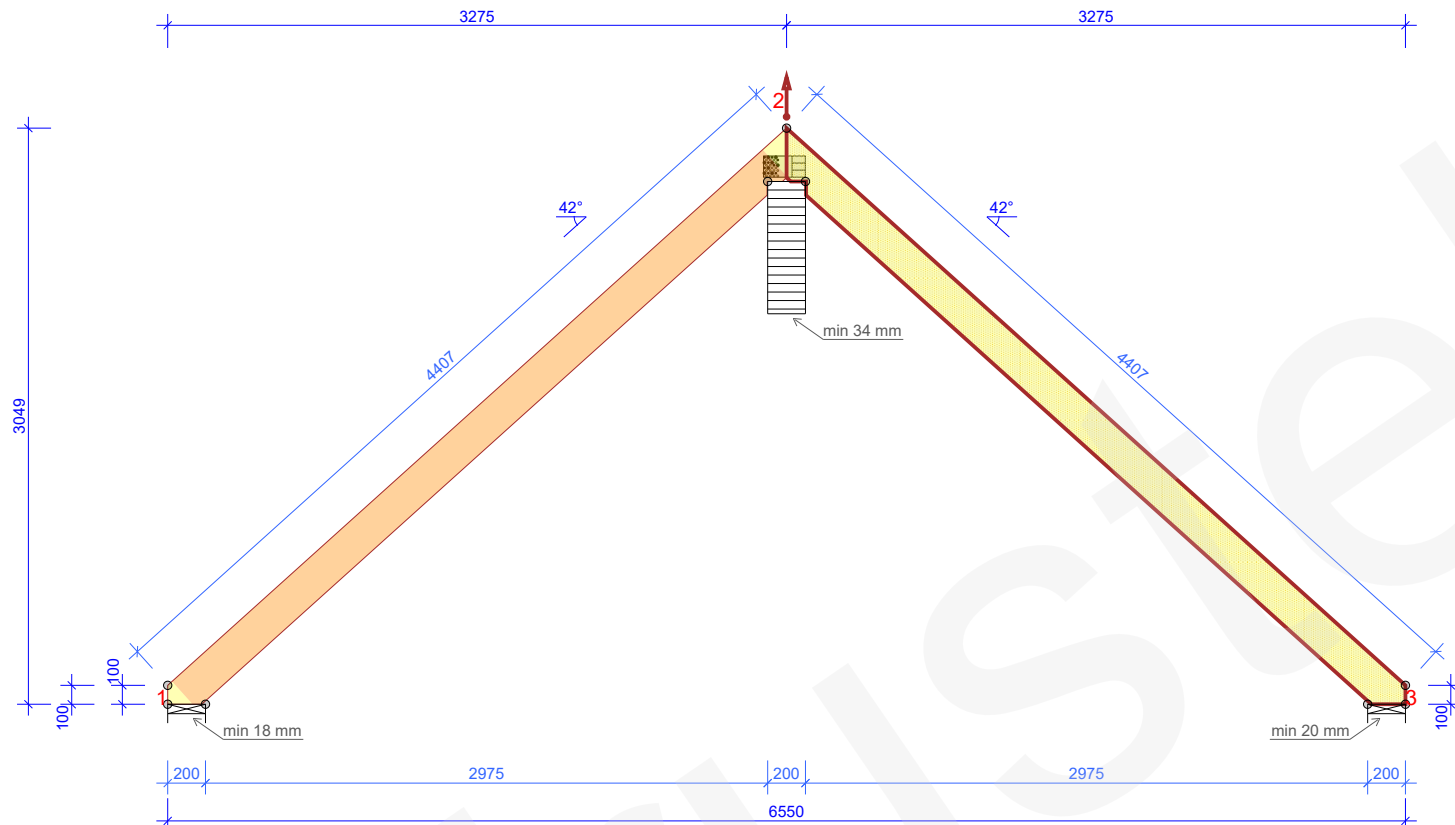
| FASTENERS - SPLICES | | | | |
|---------------------|------------|----------|-----------|-------|
| JOINT NO | PLATE TYPE | WIDTH mm | LENGTH mm | CSI % |
| | | | | |
| | | | | |
| | | | | |

© The drawing is protected under copyright law and may not be copied, distributed or otherwise used without the author's consent.

| | | | |
|---|-----|------------------|-------------|
|  | | Customer: | Project no: |
| | | Project name: | 119425TTC |
| | | Project address: | Mark: |
| | | Page name: | T1 |
| Designer | S.K | | Revision: |
| Supervisor | | | |
| Main engineer | | | Page no: |
| Cert. no | | | 3/4 |
| | | | Scale: |
| | | | 1:40 |
| | | | Date: |
| | | | 04/07/2025 |
| | | | Page no: |
| | | | |

04/07/2025 - 08:39
2025.2 (28542df)

BRACINGS ACCORDING TO TIMBER TABLE AND STABILITY OF THE TRUSS SYSTEM SHALL BE DESIGNED SEPARATELY
NB! REDUCTIONS HAVE BEEN PERFORMED



THE STRUCTURE HAS BEEN CALCULATED USING
COMPUTER PROGRAM "MITEK PAMIR",
OU Trustek_EE1 - LICENSE: 15421
DESIGN CODE: EN 1995-1-1:2004 + A2:2014 + EE NA:2007 +
A1:2008 + EE NA:2009
FULL DESIGN RESULTS AS PER CALC. PRINTOUT

| | |
|---|---------------------|
| TIMBER THICKNESS (mm): | 45 |
| TRUSS WEIGHT (kg/ply): | 56 |
| TRUSS CENTRES (mm): | 600 |
| LOAD SHARING FACTOR: | 1.1 |
| SERVICE CLASS: | 2 = 65% <= RH < 85% |
| THE TRUSS PLANT IS CONTROLLED BY : | |
| NCS Estonia OÜ | |
| PRODUCT CERTIFICATE: 2866 - CPR - 2866-CPR-0017 | |
| BRACING: SEE TIMBER TABLE | |

| | |
|------------------------------------|------|
| SNOW ZONE: | 1.5 |
| SNOW LOAD (Sk): | 1500 |
| WIND LOAD (qp(z)): | 644 |
| DEAD LOAD ON ROOF: | 550 |
| DEAD LOAD ON CEILING: | 350 |
| OTHER LOADS AS PER CALC. PRINT-OUT | |
| SELF-WEIGHT ADDED | |

| JOINT NO | DIR. | LC P/L MAX | LC M MAX | LC S MAX | LC I MAX | LC I MIN | S-W mm |
|----------|------|------------|----------|----------|----------|----------|--------|
| 1 | HOR. | 0 | 0 | -1443 | 0 | - | |
| 1 | VER. | 1607 | 3164 | 3612 | 0 | 0 | 18 |
| 2 | VER. | 3998 | 7779 | 8543 | 0 | 0 | 34 |
| 3 | VER. | 2383 | 4799 | 5556 | 0 | 0 | 20 |

| JOINT NO | VER. | HOR. | LC NO. |
|----------|------|------|----------------------------|
| 1-2 | 9.4 | 8.5 | 1001:1:6 (WFIN (FREQUENT)) |
| 2-3 | 7.6 | -6.5 | 1001:2:6 (WFIN (FREQUENT)) |
| 2 | -1.2 | -1 | 1002:6 (WFIN (FREQUENT)) |

FOR DEFLECTIONS AT OTHER POINTS - SEE CALC. PRINTOUT

| TIMBER THICKNESS 45 mm | | | | |
|------------------------|-------------|-------|-------------------|----------|
| JOINT FR-TO | DEPTH mm | GRADE | BRACING mm/no. | CSI % |
| 1-2 | 195 | C24 | 350 | 55 |
| 2-3 | 195 | C24 | 350 | 42 |
| 2-3 | 1x45x195 | C24 | NONE | 39 |

| FASTENERS - SPLICES EXCL | | | | |
|--------------------------|---------------|-------------|--------------|----------|
| JOINT NO | PLATE TYPE | WIDTH mm | LENGTH mm | CSI % |
| 2 | GNT150S-K | 112 | 221 | 81 |

FASTENER LOCATION TOLERANCE: 8 mm

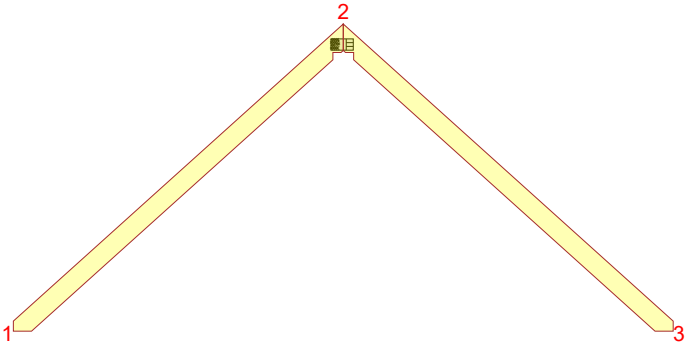
| FASTENERS - SPLICES | | | | |
|---------------------|------------|----------|-----------|------|
| JOINT NO | PLATE TYPE | WIDTH mm | LENGTH mm | CS % |
| | | | | |

© The drawing is protected under copyright law and may not be copied, distributed or otherwise used without the author's consent.

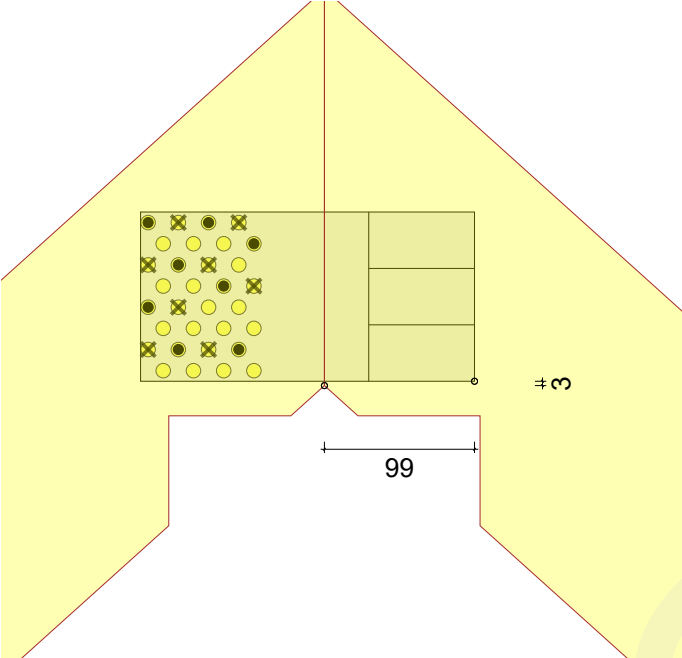


| | | | | |
|-----------------|-----|--|--|--|
| | | | | Page name: Page no: 4/4 Scale: 1:40 Date: Page no: 04/07/2025 |
| Designer | S.K | | | |
| Supervisor | | | | |
| 9 Main engineer | | | | |
| f) Cert. no | | | | |

T1



2



GNT150S-K 112x221
Nail: 8 no. RINGED NAIL 4 X 35 / side

92%
Scale 1:5

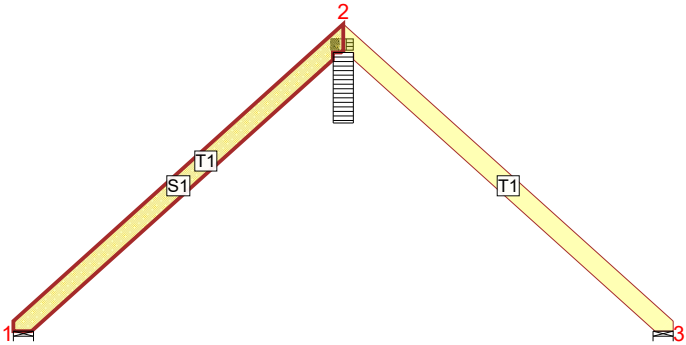
FASTENER LOCATION TOLERANCE: 8 mm



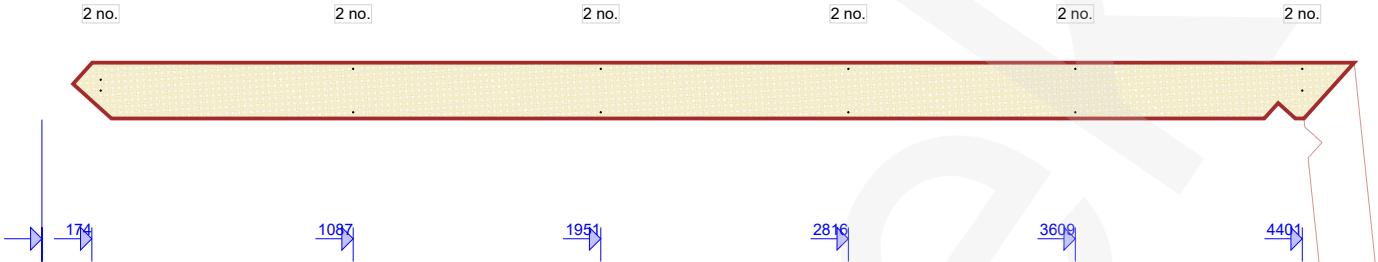
| | | | |
|---------------|-----|--|--|
| Designer | S.K | | |
| Supervisor | | | |
| Main engineer | | | |
| Cert. no | | | |

| | | |
|------------------|--------------------------|----------|
| Customer: | Project no: 119425TTC | |
| Project name: | Mark: T1 | |
| Project address: | Revision: | |
| Page name: | Page no: 1/1 | |
| | Scale: 1:75 | |
| | Date: 04/07/2025 | Page no: |
| | | |

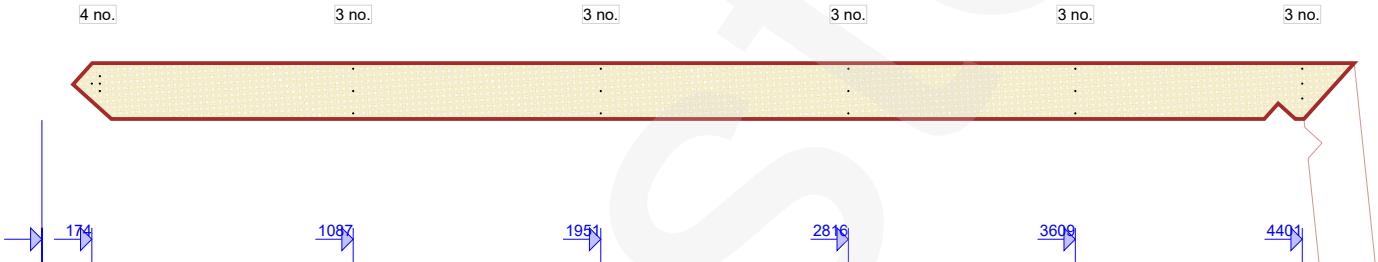
T1.2



S1 Smooth nail 3.1 x 90 45 x 195 C24 - 4583 mm Single - front

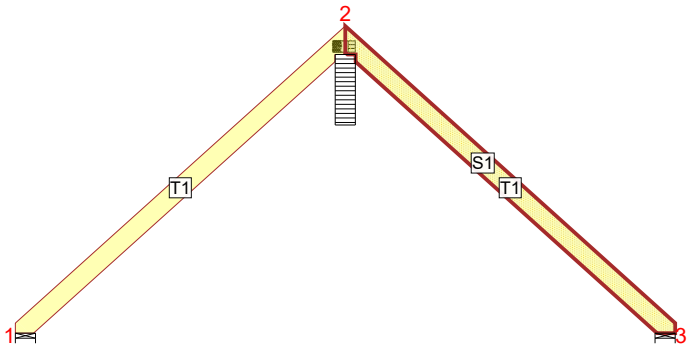


S1 Square nail 2.8 x 75 45 x 195 C24 - 4583 mm Single - front

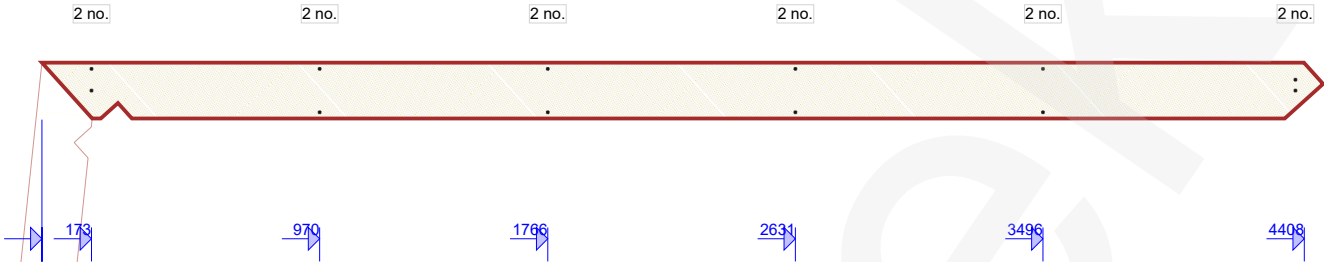


| | | | | | |
|--|--|------------------|-----|--------------------------|--|
| <div></div> <div>04/07/2025 - 08:39 2025.2 (28542df)</div> | | Customer: | | Project no: 119425TTC | |
| | | Project name: | | Mark: T1 | |
| | | Project address: | | Revision: | |
| | | Page name: | | Page no: 1/2 | |
| | | Designer | S.K | Scale: 1:75 | |
| | | Supervisor | | Date: | |
| | | Main engineer | | Page no: | |
| | | Cert. no | | 04/07/2025 | |

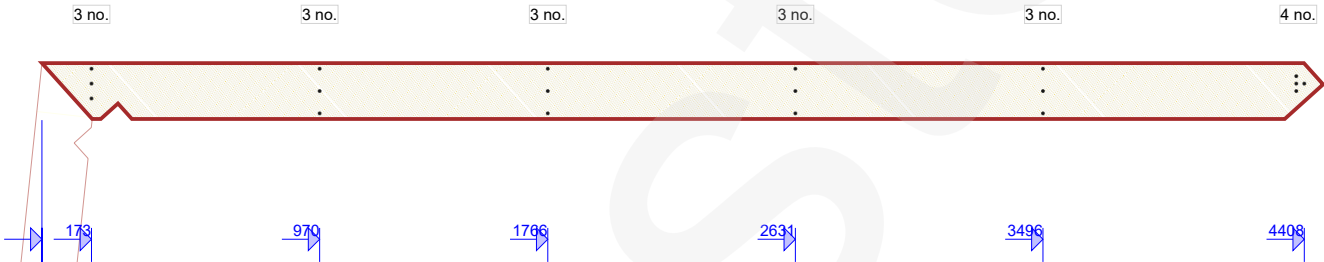
T1.3



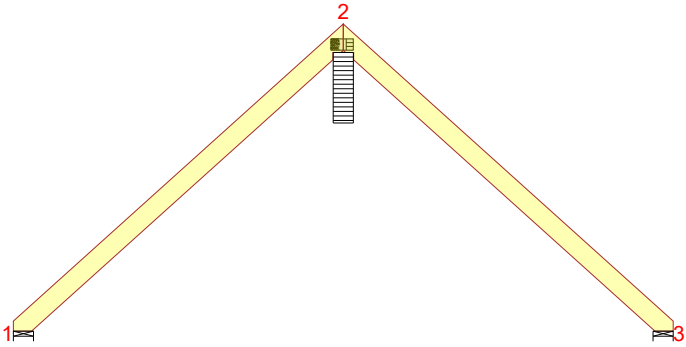
S1 Smooth nail 3.1 x 90 45 x 195 C24 - 4583 mm Single - back



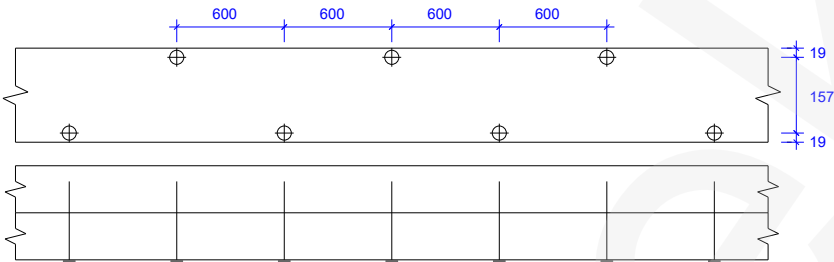
S1 Square nail 2.8 x 75 45 x 195 C24 - 4583 mm Single - back



| | | | | | | | | |
|--|--|--|--|--|------------------|--|--------------------------|--|
| 04/07/2025 - 08:39 2025.2 (28542df) |  | | | | Customer: | | Project no: 119425TTC | |
| | | | | | Project name: | | Mark: T1 | |
| | | | | | Project address: | | Revision: | |
| | | | | | Page name: | | Page no: 2/2 | |
| | Designer S.K | | | | | | Scale: 1:75 | |
| | Supervisor | | | | | | Date: | |
| | Main engineer | | | | | | Page no: 04/07/2025 | |
| Cert. no | | | | | | | | |



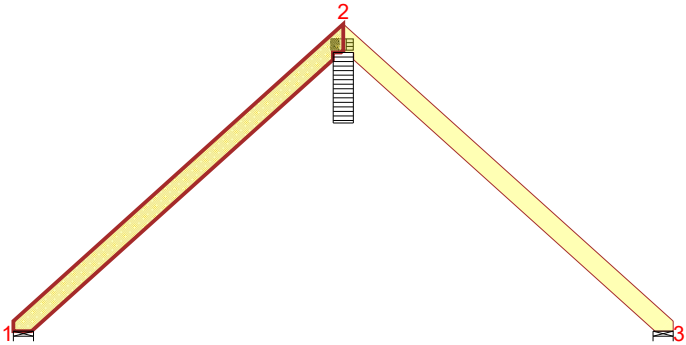
Connector: Smooth nail 2.8 x 75 Member type: Top chord 2-Ply 45x195 C24
Members: 1-2, 2-3



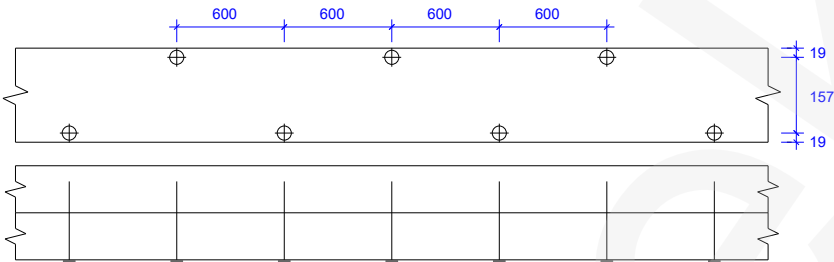
04/07/2025 - 08:39
2025.2 (28542df)

| | | | |
|---------------|-----|--|--|
| Designer | S.K | | |
| Supervisor | | | |
| Main engineer | | | |
| Cert. no | | | |

| | | | |
|------------------|--|-------------|----------|
| Customer: | | Project no: | |
| | | 119425TTC | |
| Project name: | | Mark: | |
| | | T1 | |
| Project address: | | Revision: | |
| | | | |
| Page name: | | Page no: | |
| | | 1/3 | |
| | | Scale: | |
| | | 1:75 | |
| | | Date: | Page no: |
| | | 04/07/2025 | |



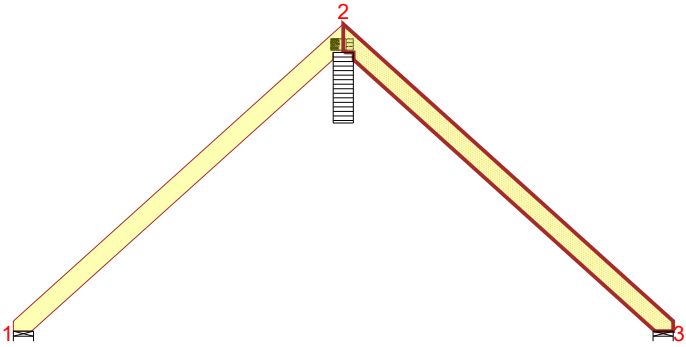
Connector: Smooth nail 2.8 x 75 Member type: Top chord 2-Ply 45x195 C24
Members: 1-2, 2-3



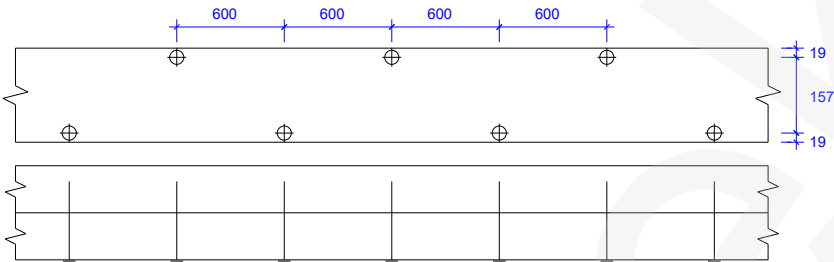
04/07/2025 - 08:39
2025.2 (28542df)

| | | | |
|---------------|-----|--|--|
| Designer | S.K | | |
| Supervisor | | | |
| Main engineer | | | |
| Cert. no | | | |

| | | | |
|------------------|--|-------------|----------|
| Customer: | | Project no: | |
| | | 119425TTC | |
| Project name: | | Mark: | |
| | | T1 | |
| Project address: | | Revision: | |
| | | | |
| Page name: | | Page no: | |
| | | 2/3 | |
| | | Scale: | |
| | | 1:75 | |
| | | Date: | Page no: |
| | | 04/07/2025 | |



Connector: Smooth nail 2.8 x 75 Member type: Top chord 2-Ply 45x195 C24
Members: 1-2, 2-3

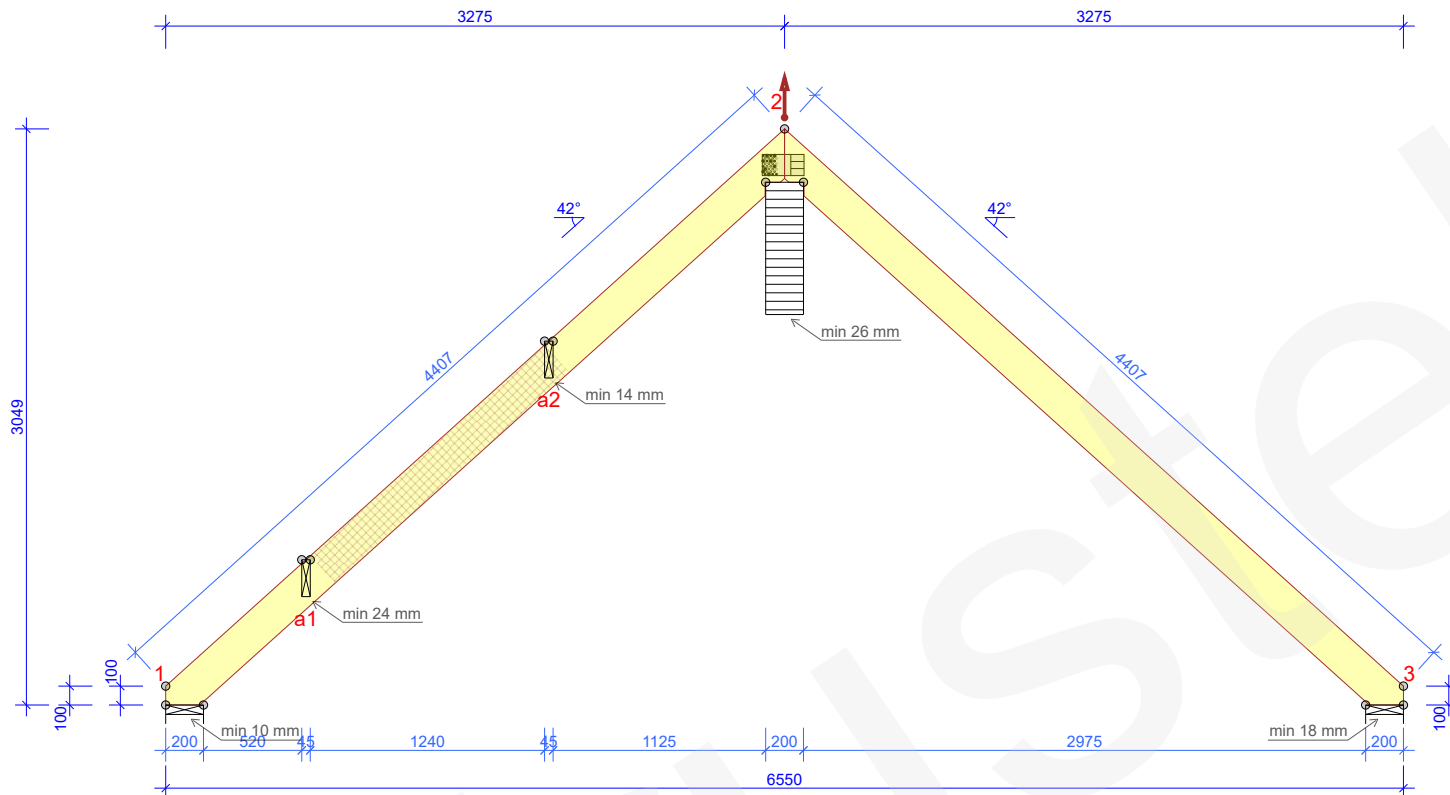


04/07/2025 - 08:39
2025.2 (28542df)

| | | | |
|---------------|-----|--|--|
| Designer | S.K | | |
| Supervisor | | | |
| Main engineer | | | |
| Cert. no | | | |

| | | |
|------------------|--------------------------|----------|
| Customer: | Project no: 119425TTC | |
| Project name: | Mark: T1 | |
| Project address: | Revision: | |
| Page name: | Page no: 3/3 | |
| | Scale: 1:75 | |
| | Date: 04/07/2025 | Page no: |
| | | |

BRACINGS ACCORDING TO TIMBER TABLE AND STABILITY OF THE TRUSS SYSTEM SHALL BE DESIGNED SEPARATELY
NB! REDUCTIONS HAVE BEEN PERFORMED



| JOINT NO | PLATE TYPE | WIDTH mm | LENGTH mm | CSI % |
|-------------|---------------|-------------|--------------|----------|
| 2 | GNT150S-K | 112 | 221 | 78 |

FASTENER LOCATION TOLERANCE: 8 mm

© The drawing is protected under copyright law and may not be copied, distributed or otherwise used without the author's consent.

THE STRUCTURE HAS BEEN CALCULATED USING
COMPUTER PROGRAM "MITEK PAMIR",
OU Trustek_EE1 - LICENSE: 15421
DESIGN CODE: EN 1995-1-1:2004 + A2:2014 + EE NA:2007 +
A1:2008 + EE NA:2009
FULL DESIGN RESULTS AS PER CALC. PRINTOUT

| | |
|---|---------------------|
| TIMBER THICKNESS (mm): | 45 |
| TRUSS WEIGHT (kg/ply): | 37 |
| TRUSS CENTRES (mm): | 600 |
| LOAD SHARING FACTOR: | 1.1 |
| SERVICE CLASS: | 2 = 65% <= RH < 85% |
| THE TRUSS PLANT IS CONTROLLED BY : | |
| NCS Estonia OÜ | |
| PRODUCT CERTIFICATE: 2866 - CPR - 2866-CPR-0017 | |
| BRACING: SEE TIMBER TABLE | |

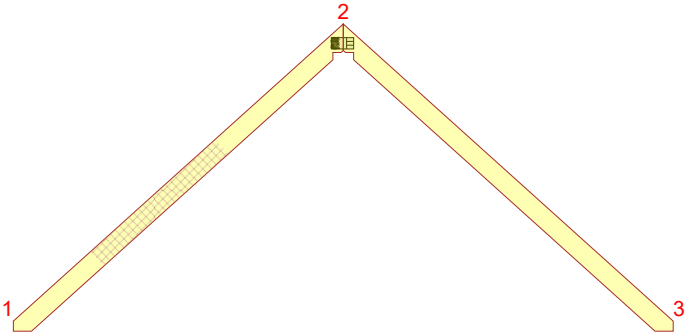
| | |
|-----------------------|------|
| SNOW ZONE: | 1.5 |
| SNOW LOAD (Sk): | 1500 |
| WIND LOAD (qp(z)): | 644 |
| DEAD LOAD ON ROOF: | 550 |
| DEAD LOAD ON CEILING: | 250 |
| SELF-WEIGHT ADDED | |

| JOINT NO | DIR. | LC P/L MAX | LC M MAX | LC S MAX | LC I MAX | LC I MIN | S-W mm |
|----------|------|------------|----------|----------|----------|----------|--------|
| 1 | HOR. | 0 | 0 | 636 | 0 | - | |
| 1 | VER. | 33 | 97 | 590 | 0 | 0 | 10 |
| 2 | VER. | 2093 | 4311 | 4981 | 0 | 0 | 26 |
| 3 | HOR. | 0 | 0 | 1342 | 0 | - | |
| 3 | VER. | 1477 | 3074 | 3361 | 0 | 0 | 18 |
| a1 | VER. | 1225 | 2587 | 3339 | 0 | 0 | 24 |
| a2 | VER. | 1064 | 2288 | 2808 | 0 | 0 | 14 |

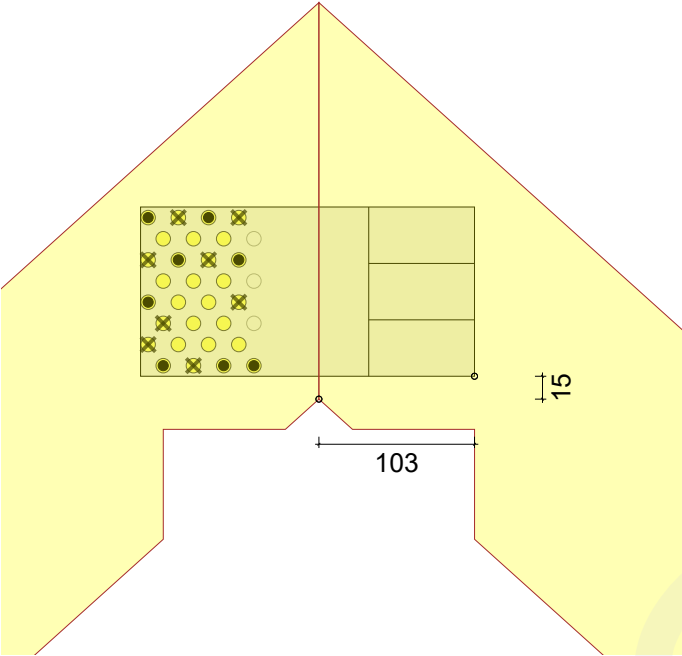
| JOINT NO | VER. | HOR. | LC NO. |
|----------|------|------|----------------------------|
| 2-3 | 9.4 | -8.4 | 1001:2:6 (WFIN (FREQUENT)) |
| 3 | -0.8 | 0.7 | 1001:2:6 (WFIN (FREQUENT)) |
| 2 | -0.4 | -0.6 | 1008:8:1 (WINST) |

FOR DEFLECTIONS AT OTHER POINTS - SEE CALC. PRINTOUT

T3




2



GNT150S-K 112x221
Nail: 8 no. RINGED NAIL 4 X 35 / side

78%
Scale 1:5

FASTENER LOCATION TOLERANCE: 8 mm

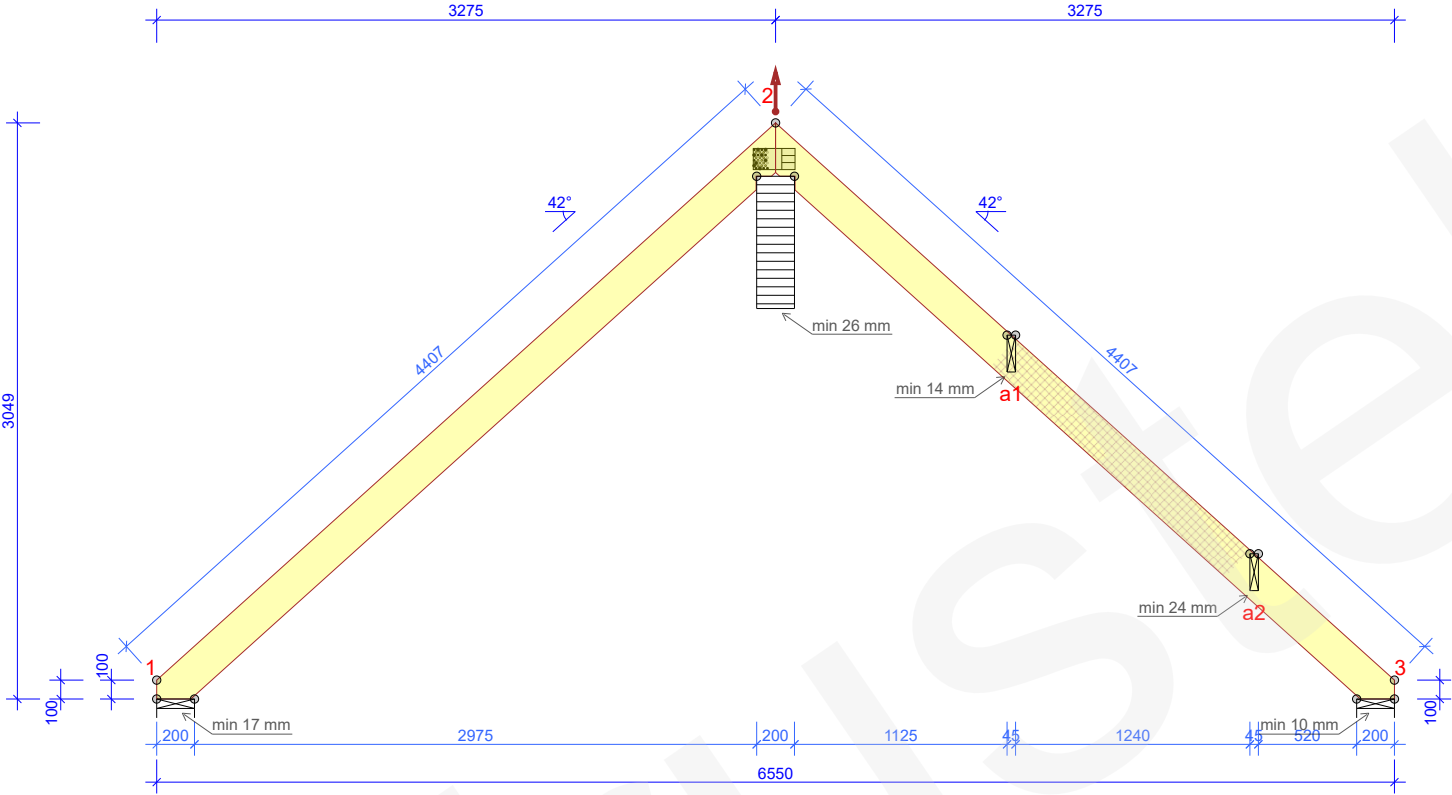


| | | | |
|---------------|-----|--|--|
| Designer | S.K | | |
| Supervisor | | | |
| Main engineer | | | |
| Cert. no | | | |

| | | | |
|------------------|--|-------------|----------|
| Customer: | | Project no: | |
| | | 119425TTC | |
| Project name: | | Mark: | |
| | | T3 | |
| Project address: | | Revision: | |
| | | | |
| Page name: | | Page no: | |
| | | 1/1 | |
| | | Scale: | |
| | | 1:75 | |
| | | Date: | Page no: |
| | | 03/07/2025 | |

T4 - 1 no. 1-ply

BRACINGS ACCORDING TO TIMBER TABLE AND STABILITY OF THE TRUSS SYSTEM SHALL BE DESIGNED SEPARATELY
NB! REDUCTIONS HAVE BEEN PERFORMED



GENERAL DIRECTIONS

THE STRUCTURE HAS BEEN CALCULATED USING
COMPUTER PROGRAM "MITEK PAMIR",
OU Trustek_EE1 - LICENSE: 15421
DESIGN CODE: EN 1995-1-1:2004 + A2:2014 + EE NA:2007 +
A1:2008 + EE NA:2009
FULL DESIGN RESULTS AS PER CALC. PRINTOUT

GENERAL SETTINGS

TIMBER THICKNESS (mm): 45
TRUSS WEIGHT (kg/ply): 37
TRUSS CENTRES (mm): 600
LOAD SHARING FACTOR: 1.1
SERVICE CLASS: 2 = 65% <= RH < 85%
THE TRUSS PLANT IS CONTROLLED BY :
NCS Estonia OÜ
PRODUCT CERTIFICATE: 2866 - CPR - 2866-CPR-0017
BRACING: SEE TIMBER TABLE

LOADS (N/m²)

SNOW ZONE: 1.5
SNOW LOAD (Sk): 1500
WIND LOAD (qp(z)): 644
DEAD LOAD ON ROOF: 550
DEAD LOAD ON CEILING: 250
SELF-WEIGHT ADDED

SUPPORT REACTIONS (N) (ULTIMATE)

| JOINT NO | DIR. | LC P/L MAX | LC M MAX | LC S MAX | LC I MAX | LC I MIN | S-W mm |
|----------|------|---------------|-------------|-------------|-------------|-------------|-----------|
| 1 | HOR. | 0 | 0 | -1342 | 0 | - | |
| 1 | VER. | 1469 | 3057 | 3349 | 0 | 0 | 17 |
| 2 | VER. | 2119 | 4363 | 5048 | 0 | 0 | 26 |
| 3 | HOR. | 0 | 0 | -636 | 0 | - | |
| 3 | VER. | 33 | 97 | 590 | 0 | 0 | 10 |
| a1 | VER. | 1046 | 2267 | 2806 | 0 | 0 | 14 |
| a2 | VER. | 1225 | 2587 | 3339 | 0 | 0 | 24 |

MAX DEFLECTION (mm) (SERVICEABILITY)

| JOINT NO | VER. | HOR. | LC NO. |
|----------|------|------|----------------------------|
| 1-2 | 9.2 | 8.3 | 1001:1:6 (WFIN (FREQUENT)) |
| 1 | -0.8 | -0.7 | 1001:1:6 (WFIN (FREQUENT)) |
| 2 | -0.8 | -0.7 | 1002:6 (WFIN (FREQUENT)) |

FOR DEFLECTIONS AT OTHER POINTS - SEE CALC. PRINTOUT


| TIMBER THICKNESS 45 mm | | | | |
|------------------------|----------|-------|----------------|-------|
| JOINT FR-TO | DEPTH mm | GRADE | BRACING mm/no. | CSI % |
| 1-2 | 195 | C24 | 350 | 53 |
| 2-3 | 195 | C24 | 350 | 16 |

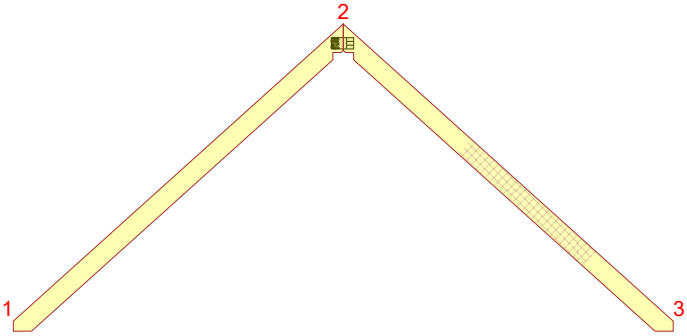
| FASTENERS - SPLICES EXCL | | | | |
|--------------------------|------------|----------|-----------|-------|
| JOINT NO | PLATE TYPE | WIDTH mm | LENGTH mm | CSI % |
| 2 | GNT150S-K | 112 | 221 | 47 |

FASTENER LOCATION TOLERANCE: 8 mm

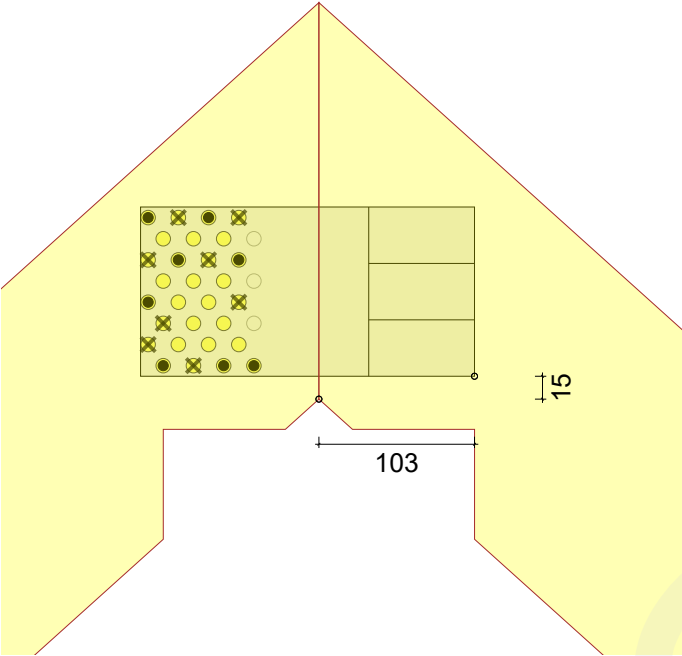
| FASTENERS - SPLICES | | | | |
|---------------------|------------|----------|-----------|-------|
| JOINT NO | PLATE TYPE | WIDTH mm | LENGTH mm | CSI % |
| | | | | |
| | | | | |
| | | | | |

© The drawing is protected under copyright law and may not be copied, distributed or otherwise used without the author's consent.

| | | | | | | | |
|---|--|---------------|-----|------------------|--|-------------|------------|
|  | | Designer | S.K | Project name: | | Project no: | 119425TTC |
| | | Supervisor | | Project address: | | Mark: | T4 |
| | | Main engineer | | Page name: | | Revision: | |
| | | Cert. no | | | | Page no: | 1/1 |
| 03/07/2025 - 12:49 2025.2 (28542df) | | | | | | Scale: | 1:40 |
| | | | | | | Date: | 03/07/2025 |
| | | | | | | Page no: | |



2



GNT150S-K 112x221
Nail: 8 no. RINGED NAIL 4 X 35 / side

47%
Scale 1:5

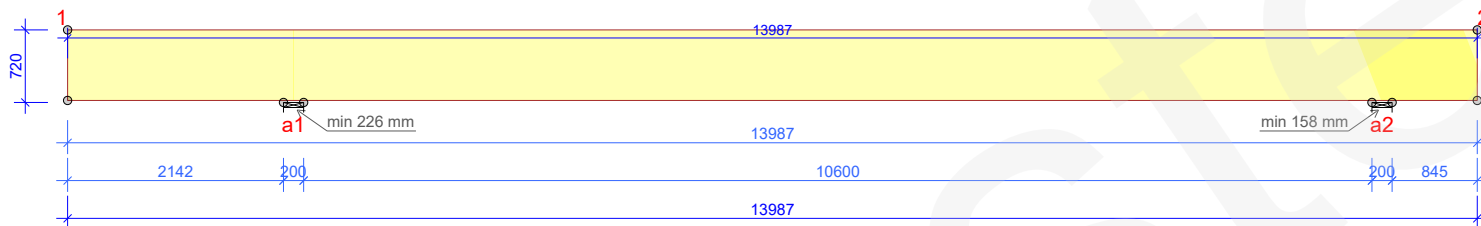
FASTENER LOCATION TOLERANCE: 8 mm



| | | | |
|---------------|-----|--|--|
| Designer | S.K | | |
| Supervisor | | | |
| Main engineer | | | |
| Cert. no | | | |

03/07/2025 - 12:49
2025.2 (28542df)

| | | |
|------------------|--------------------------|----------|
| Customer: | Project no: 119425TTC | |
| Project name: | Mark: T4 | |
| Project address: | Revision: | |
| Page name: | Page no: 1/1 | |
| | Scale: 1:75 | |
| | Date: 03/07/2025 | Page no: |
| | | |



THE STRUCTURE HAS BEEN CALCULATED USING
COMPUTER PROGRAM "MITEK PAMIR",
OU Trustek_EE1 - LICENSE: 15421
DESIGN CODE: EN 1995-1-1:2004 + A2:2014 + EE NA:2007 +
A1:2008 + EE NA:2009
FULL DESIGN RESULTS AS PER CALC. PRINTOUT

| | |
|---|---------------------|
| TIMBER THICKNESS (mm): | 200 |
| TRUSS WEIGHT (kg/ply): | 940 |
| TRUSS CENTRES (mm): | 600 |
| LOAD SHARING FACTOR: | 1 |
| SERVICE CLASS: | 2 = 65% <= RH < 85% |
| THE TRUSS PLANT IS CONTROLLED BY : | |
| NCS Estonia OÜ | |
| PRODUCT CERTIFICATE: 2866 - CPR - 2866-CPR-0017 | |
| BRACING: SEE TIMBER TABLE | |


| | |
|------------------------------------|------|
| SNOW ZONE: | 1.5 |
| SNOW LOAD (Sk): | 1500 |
| WIND LOAD (qp(z)): | 644 |
| DEAD LOAD ON ROOF: | 550 |
| OTHER LOADS AS PER CALC. PRINT-OUT | |
| SELF-WEIGHT ADDED | |

| JOINT NO | DIR. | LC P/L MAX | LC M MAX | LC S MAX | LC I MAX | LC I MIN | S-W mm |
|----------|------|---------------|-------------|-------------|-------------|-------------|-----------|
| a1 | VER. | 53553 | 97087 | 106046 | 0 | 0 | 226 |
| a2 | VER. | 41410 | 75070 | 81983 | 0 | 0 | 158 |

| JOINT NO | VER. | HOR. | LC NO. |
|--|-------|------|--------------------------|
| a1-a2 | 26 | 0 | 1002:6 (WFIN (FREQUENT)) |
| a1-1 | -13.2 | 0 | 1002:6 (WFIN (FREQUENT)) |
| a2-2 | -5.1 | 0 | 1000:6 (WFIN (FREQUENT)) |
| FOR DEFLECTIONS AT OTHER POINTS - SEE CALC. PRINTOUT | | | |

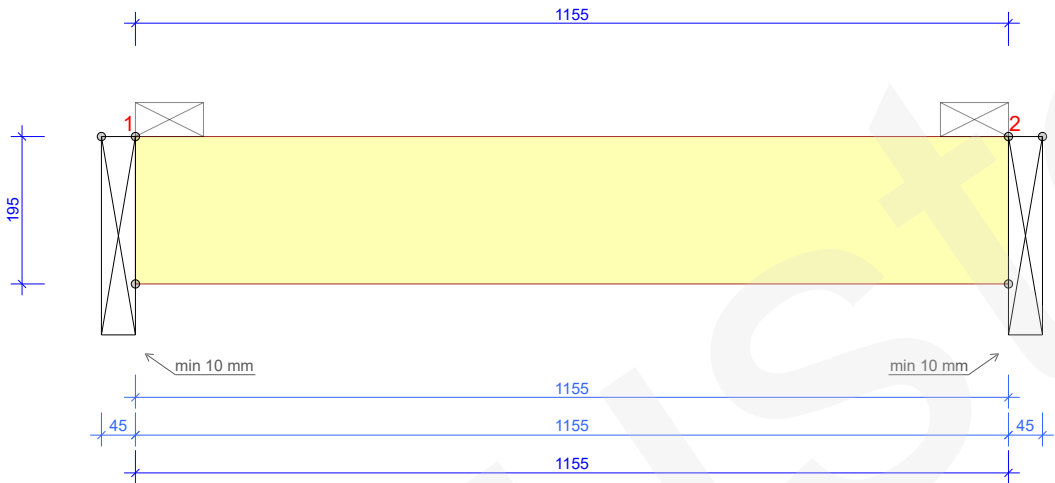
| TIMBER THICKNESS 200 mm | | | | |
|-------------------------|-------------|-------|-------------------|----------|
| JOINT FR-TO | DEPTH mm | GRADE | BRACING mm/no. | CSI % |
| 1-2 | 700! | GL28h | NONE | 57 |

© The drawing is protected under copyright law and may not be copied, distributed or otherwise used without the author's consent.

| | | | | | | | |
|---|--|--|--|------------------|--|---------------------------------|--|
|  | | | | Customer: | | Project no: 119425TTC | |
| | | | | Project name: | | Mark: B1 | |
| | | | | Project address: | | Revision: | |
| | | | | Page name: | | Page no: 1/1 | |
| Designer S.K | | | | | | Scale: 1:75 | |
| Supervisor | | | | | | Date: | |
| Main engineer | | | | | | Page no: | |
| Cert no | | | | | | 04/07/2025 | |

ö1a - 1 no.

BRACINGS ACCORDING TO TIMBER TABLE AND STABILITY OF THE TRUSS SYSTEM SHALL BE DESIGNED SEPARATELY
LONGITUDINAL BRACES MUST BE INSTALLED PRIOR TO STANDING ON HORIZONTAL TOP CHORDS
☒ INDICATES BRACING



GENERAL DIRECTIONS

THE STRUCTURE HAS BEEN CALCULATED USING
COMPUTER PROGRAM "MITEK PAMIR",
OU Trustek_EE1 - LICENSE: 15421
DESIGN CODE: EN 1995-1-1:2004 + A2:2014 + EE NA:2007 +
A1:2008 + EE NA:2009
FULL DESIGN RESULTS AS PER CALC. PRINTOUT

GENERAL SETTINGS

TIMBER THICKNESS (mm): 45
TRUSS WEIGHT (kg/ply): 5
TRUSS CENTRES (mm): 600
LOAD SHARING FACTOR: 1.1
SERVICE CLASS: 2 = 65% <= RH < 85%
THE TRUSS PLANT IS CONTROLLED BY :
NCS Estonia OÜ
PRODUCT CERTIFICATE: 2866 - CPR - 2866-CPR-0017
BRACING: SEE TIMBER TABLE

LOADS (N/m²)

SNOW ZONE: 1.5
SNOW LOAD (Sk): 1500
WIND LOAD (qp(z)): 644
DEAD LOAD ON ROOF: 550
DEAD LOAD ON CEILING: 250
OTHER LOADS AS PER CALC. PRINT-OUT
SELF-WEIGHT ADDED

SUPPORT REACTIONS (N) (ULTIMATE)

| JOINT NO | DIR. | LC P/L MAX | LC M MAX | LC S MAX | LC I MAX | LC I MIN | S-W mm |
|----------|------|---------------|-------------|-------------|-------------|-------------|-----------|
| 1 | VER. | 821 | 1780 | 1955 | 0 | 0 | 10 |
| 2 | VER. | 821 | 1780 | 1955 | 0 | 0 | 10 |


MAX DEFLECTION (mm) (SERVICEABILITY)

| JOINT NO | VER. | HOR. | LC NO. |
|----------|------|------|----------------------------|
| 1-2 | 0.4 | 0 | 1001:1:6 (WFIN (FREQUENT)) |
| 1-2 | 0 | 0 | 1000:1 (WINST) |

FOR DEFLECTIONS AT OTHER POINTS - SEE CALC. PRINTOUT

| TIMBER THICKNESS 45 mm | | | | |
|------------------------|----------|-------|----------------|-------|
| JOINT FR-TO | DEPTH mm | GRADE | BRACING mm/no. | CSI % |
| 1-2 | 195 | C24 | 1155 | 20 |

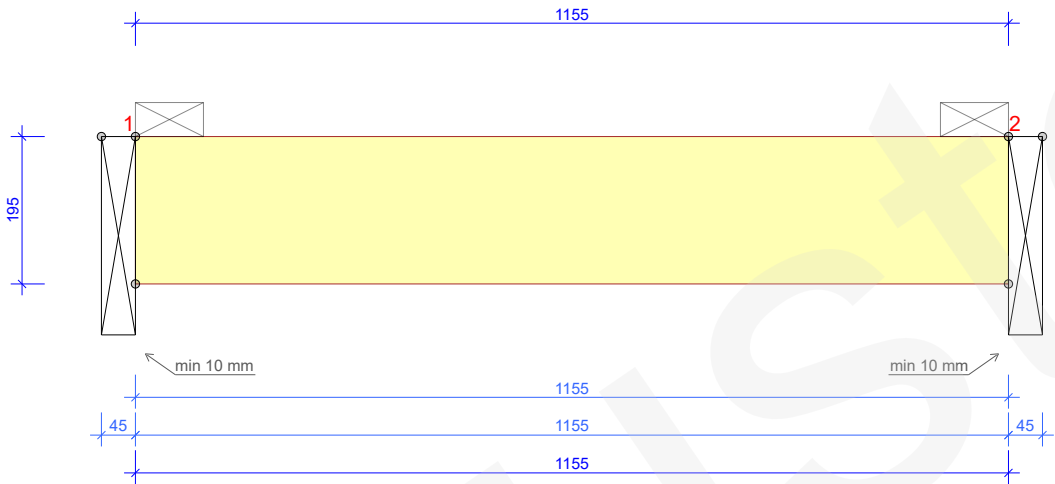
© The drawing is protected under copyright law and may not be copied, distributed or otherwise used without the author's consent.

| | | | | | | | |
|---|-----|--|--|------------------|--|--------------------------|--|
|  | | | | Customer: | | Project no: 119425TTC | |
| | | | | Project name: | | Mark: 01 | |
| | | | | Project address: | | Revision: | |
| | | | | Page name: | | Page no: 1/2 | |
| Designer | S.K | | | | | Scale: 1:10 | |
| Supervisor | | | | | | Date: | |
| Main engineer | | | | | | Page no: | |
| Cert. no | | | | | | 03/07/2025 | |

03/07/2025 - 12:49
2025.2 (28542df)

ö1b - 1 no.

BRACINGS ACCORDING TO TIMBER TABLE AND STABILITY OF THE TRUSS SYSTEM SHALL BE DESIGNED SEPARATELY
LONGITUDINAL BRACES MUST BE INSTALLED PRIOR TO STANDING ON HORIZONTAL TOP CHORDS
☒ INDICATES BRACING



GENERAL DIRECTIONS

THE STRUCTURE HAS BEEN CALCULATED USING
COMPUTER PROGRAM "MITEK PAMIR",
OU Trustek_EE1 - LICENSE: 15421
DESIGN CODE: EN 1995-1-1:2004 + A2:2014 + EE NA:2007 +
A1:2008 + EE NA:2009
FULL DESIGN RESULTS AS PER CALC. PRINTOUT

GENERAL SETTINGS

TIMBER THICKNESS (mm): 45
TRUSS WEIGHT (kg/ply): 5
TRUSS CENTRES (mm): 600
LOAD SHARING FACTOR: 1.1
SERVICE CLASS: 2 = 65% <= RH < 85%
THE TRUSS PLANT IS CONTROLLED BY :
NCS Estonia OÜ
PRODUCT CERTIFICATE: 2866 - CPR - 2866-CPR-0017
BRACING: SEE TIMBER TABLE

LOADS (N/m²)

SNOW ZONE: 1.5
SNOW LOAD (Sk): 1500
WIND LOAD (qp(z)): 644
DEAD LOAD ON ROOF: 550
DEAD LOAD ON CEILING: 250
OTHER LOADS AS PER CALC. PRINT-OUT
SELF-WEIGHT ADDED

SUPPORT REACTIONS (N) (ULTIMATE)

| JOINT NO | DIR. | LC P/L MAX | LC M MAX | LC S MAX | LC I MAX | LC I MIN | S-W mm |
|----------|------|---------------|-------------|-------------|-------------|-------------|-----------|
| 1 | VER. | 741 | 1630 | 1784 | 0 | 0 | 10 |
| 2 | VER. | 741 | 1630 | 1784 | 0 | 0 | 10 |


MAX DEFLECTION (mm) (SERVICEABILITY)

| JOINT NO | VER. | HOR. | LC NO. |
|----------|------|------|----------------------------|
| 1-2 | 0.4 | 0 | 1001:1:6 (WFIN (FREQUENT)) |
| 1-2 | 0 | 0 | 1000:1 (WINST) |

FOR DEFLECTIONS AT OTHER POINTS - SEE CALC. PRINTOUT

| TIMBER THICKNESS 45 mm | | | | |
|------------------------|----------|-------|----------------|-------|
| JOINT FR-TO | DEPTH mm | GRADE | BRACING mm/no. | CSI % |
| 1-2 | 195 | C24 | 1155 | 19 |

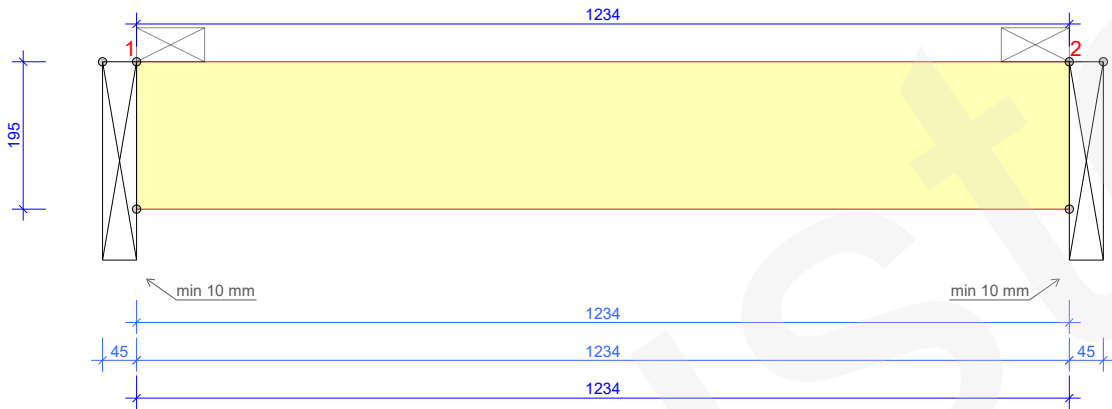
© The drawing is protected under copyright law and may not be copied, distributed or otherwise used without the author's consent.

| | | | | | | | |
|---|-----|--|--|------------------|--|--------------------------|--|
|  | | | | Customer: | | Project no: 119425TTC | |
| | | | | Project name: | | Mark: 01 | |
| | | | | Project address: | | Revision: | |
| | | | | Page name: | | Page no: 2/2 | |
| Designer | S.K | | | | | Scale: 1:10 | |
| Supervisor | | | | | | Date: | |
| Main engineer | | | | | | 03/07/2025 | |
| Cert. no | | | | | | Page no: | |

03/07/2025 - 12:49
2025.2 (28542df)

ö2a - 1 no.

BRACINGS ACCORDING TO TIMBER TABLE AND STABILITY OF THE TRUSS SYSTEM SHALL BE DESIGNED SEPARATELY
LONGITUDINAL BRACES MUST BE INSTALLED PRIOR TO STANDING ON HORIZONTAL TOP CHORDS
☒ INDICATES BRACING



GENERAL DIRECTIONS

THE STRUCTURE HAS BEEN CALCULATED USING
COMPUTER PROGRAM "MITEK PAMIR",
OU Trustek_EE1 - LICENSE: 15421
DESIGN CODE: EN 1995-1-1:2004 + A2:2014 + EE NA:2007 +
A1:2008 + EE NA:2009
FULL DESIGN RESULTS AS PER CALC. PRINTOUT

GENERAL SETTINGS

TIMBER THICKNESS (mm): 45
TRUSS WEIGHT (kg/ply): 6
TRUSS CENTRES (mm): 600
LOAD SHARING FACTOR: 1.1
SERVICE CLASS: 2 = 65% <= RH < 85%
THE TRUSS PLANT IS CONTROLLED BY :
NCS Estonia OÜ
PRODUCT CERTIFICATE: 2866 - CPR - 2866-CPR-0017
BRACING: SEE TIMBER TABLE

LOADS (N/m²)

SNOW ZONE: 1.5
SNOW LOAD (Sk): 1500
WIND LOAD (qp(z)): 644
DEAD LOAD ON ROOF: 550
DEAD LOAD ON CEILING: 250
OTHER LOADS AS PER CALC. PRINT-OUT
SELF-WEIGHT ADDED

SUPPORT REACTIONS (N) (ULTIMATE)

| JOINT NO | DIR. | LC P/L MAX | LC M MAX | LC S MAX | LC I MAX | LC I MIN | S-W mm |
|----------|------|------------|----------|----------|----------|----------|--------|
| 1 | VER. | 879 | 1905 | 2099 | 0 | 0 | 10 |
| 2 | VER. | 818 | 1789 | 1924 | 0 | 0 | 10 |


MAX DEFLECTION (mm) (SERVICEABILITY)

| JOINT NO | VER. | HOR. | LC NO. |
|----------|------|------|----------------------------|
| 1-2 | 0.5 | 0 | 1001:1:6 (WFIN (FREQUENT)) |
| 1-2 | 0 | 0 | 1000:1 (WINST) |

FOR DEFLECTIONS AT OTHER POINTS - SEE CALC. PRINTOUT

| TIMBER THICKNESS 45 mm | | | | |
|------------------------|----------|-------|----------------|-------|
| JOINT FR-TO | DEPTH mm | GRADE | BRACING mm/no. | CSI % |
| 1-2 | 195 | C24 | 1234 | 21 |

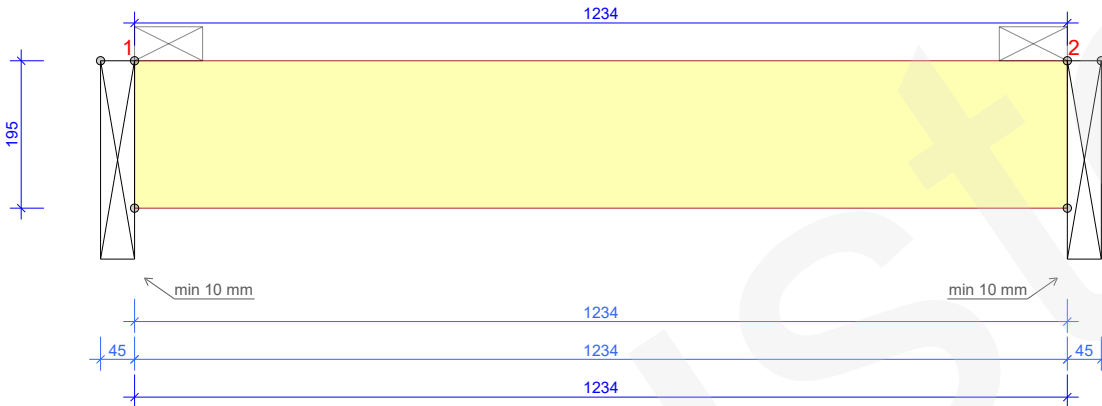
© The drawing is protected under copyright law and may not be copied, distributed or otherwise used without the author's consent.

| | | | | | | | |
|---|-----|--|--|------------------|--|--------------------------|--|
|  | | | | Customer: | | Project no: 119425TTC | |
| | | | | Project name: | | Mark: ö2 | |
| | | | | Project address: | | Revision: | |
| | | | | Page name: | | Page no: 1/2 | |
| Designer | S.K | | | | | Scale: 1:10 | |
| Supervisor | | | | | | Date: | |
| Main engineer | | | | | | 03/07/2025 | |
| Cert. no | | | | | | Page no: | |

03/07/2025 - 12:49
2025.2 (28542df)

ö2b - 1 no.

BRACINGS ACCORDING TO TIMBER TABLE AND STABILITY OF THE TRUSS SYSTEM SHALL BE DESIGNED SEPARATELY
LONGITUDINAL BRACES MUST BE INSTALLED PRIOR TO STANDING ON HORIZONTAL TOP CHORDS
☒ INDICATES BRACING



GENERAL DIRECTIONS

THE STRUCTURE HAS BEEN CALCULATED USING
COMPUTER PROGRAM "MITEK PAMIR",
OU Trustek_EE1 - LICENSE: 15421
DESIGN CODE: EN 1995-1-1:2004 + A2:2014 + EE NA:2007 +
A1:2008 + EE NA:2009
FULL DESIGN RESULTS AS PER CALC. PRINTOUT

GENERAL SETTINGS

TIMBER THICKNESS (mm): 45
TRUSS WEIGHT (kg/ply): 6
TRUSS CENTRES (mm): 600
LOAD SHARING FACTOR: 1.1
SERVICE CLASS: 2 = 65% <= RH < 85%
THE TRUSS PLANT IS CONTROLLED BY :
NCS Estonia OÜ
PRODUCT CERTIFICATE: 2866 - CPR - 2866-CPR-0017
BRACING: SEE TIMBER TABLE

LOADS (N/m²)

SNOW ZONE: 1.5
SNOW LOAD (Sk): 1500
WIND LOAD (qp(z)): 644
DEAD LOAD ON ROOF: 550
DEAD LOAD ON CEILING: 250
OTHER LOADS AS PER CALC. PRINT-OUT
SELF-WEIGHT ADDED

SUPPORT REACTIONS (N) (ULTIMATE)

| JOINT NO | DIR. | LC P/L MAX | LC M MAX | LC S MAX | LC I MAX | LC I MIN | S-W mm |
|----------|------|---------------|-------------|-------------|-------------|-------------|-----------|
| 1 | VER. | 783 | 1733 | 1904 | 0 | 0 | 10 |
| 2 | VER. | 735 | 1641 | 1779 | 0 | 0 | 10 |


MAX DEFLECTION (mm) (SERVICEABILITY)

| JOINT NO | VER. | HOR. | LC NO. |
|----------|------|------|----------------------------|
| 1-2 | 0.4 | 0 | 1001:1:6 (WFIN (FREQUENT)) |
| 1-2 | 0 | 0 | 1000:1 (WINST) |

FOR DEFLECTIONS AT OTHER POINTS - SEE CALC. PRINTOUT

| TIMBER THICKNESS 45 mm | | | | |
|------------------------|----------|-------|----------------|-------|
| JOINT FR-TO | DEPTH mm | GRADE | BRACING mm/no. | CSI % |
| 1-2 | 195 | C24 | 1234 | 21 |

© The drawing is protected under copyright law and may not be copied, distributed or otherwise used without the author's consent.

| | | | | | | | |
|---|--|--|--|------------------|--|-------------|--|
|  | | | | Customer: | | Project no: | |
| | | | | | | 119425TTC | |
| | | | | Project name: | | Mark: | |
| | | | | | | ö2 | |
| | | | | Project address: | | Revision: | |
| | | | | Page name: | | Page no: | |
| Designer S.K | | | | | | 2/2 | |
| Supervisor | | | | | | Scale: | |
| Main engineer | | | | | | 1:10 | |
| Cert. no | | | | | | Date: | |
| | | | | | | Page no: | |
| | | | | | | 03/07/2025 | |

03/07/2025 - 12:49
2025.2 (28542df)