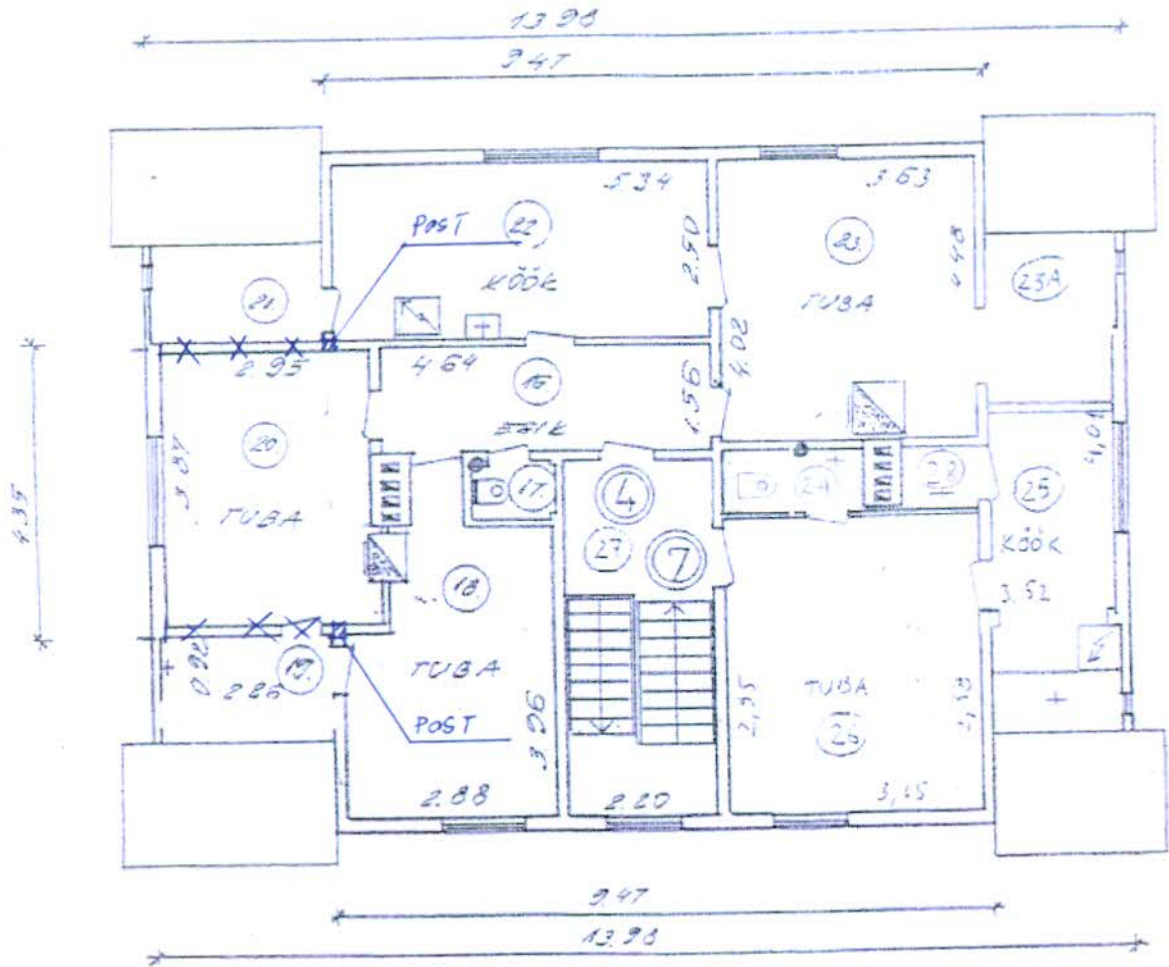


Köite sisukord

Joonised:

1. Keldrikorruse plaan
2. Esimese korruse plaan
3. Katusekorruse plaan
4. Tala toetus postile (seina kõrval), sõlm „1“ ja sõlm „1*“
5. Sõlm „2“ ja sõlm „3“
6. Peatala toetus postile, sõlm „4“
7. Postid ja vundament, sõlm „4*“
8. Vundamendi laiendus, sõlm „5“

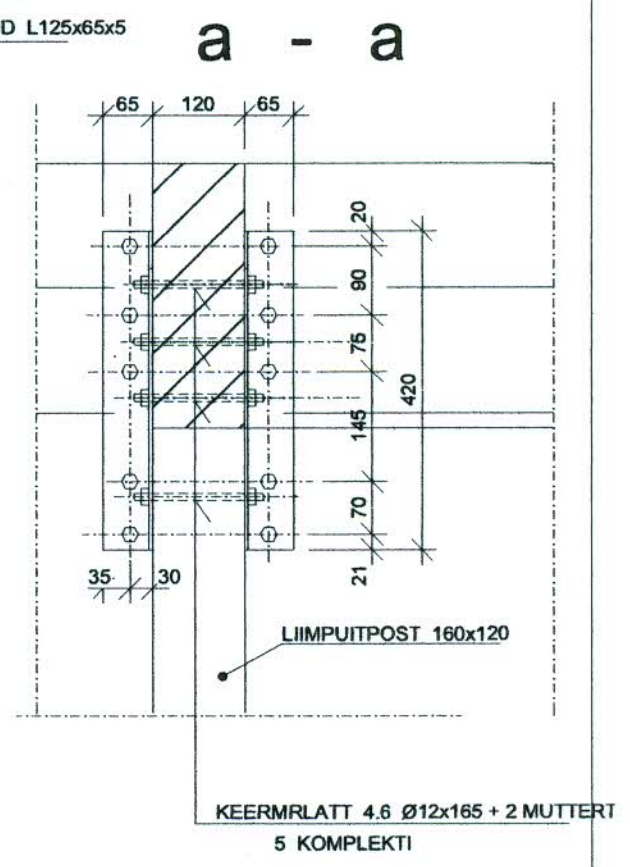
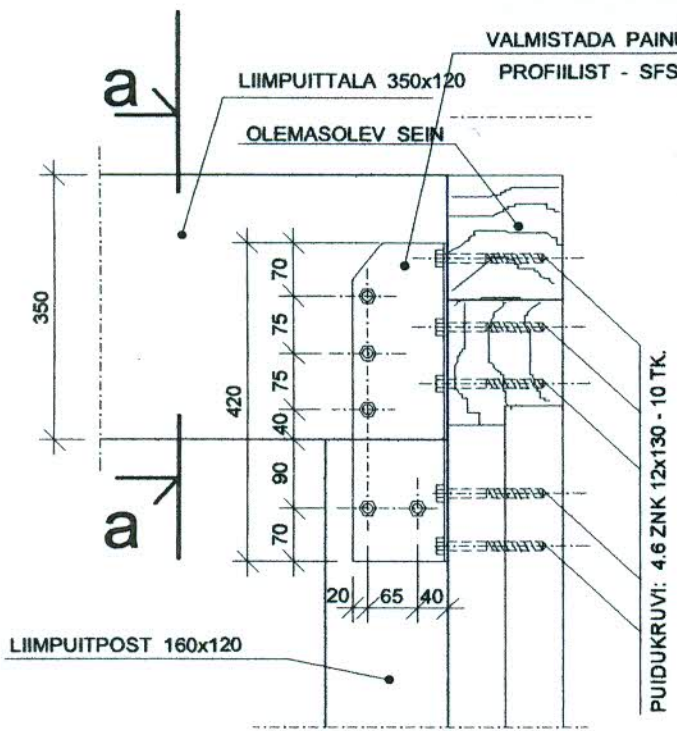
KATUSEKORRUS



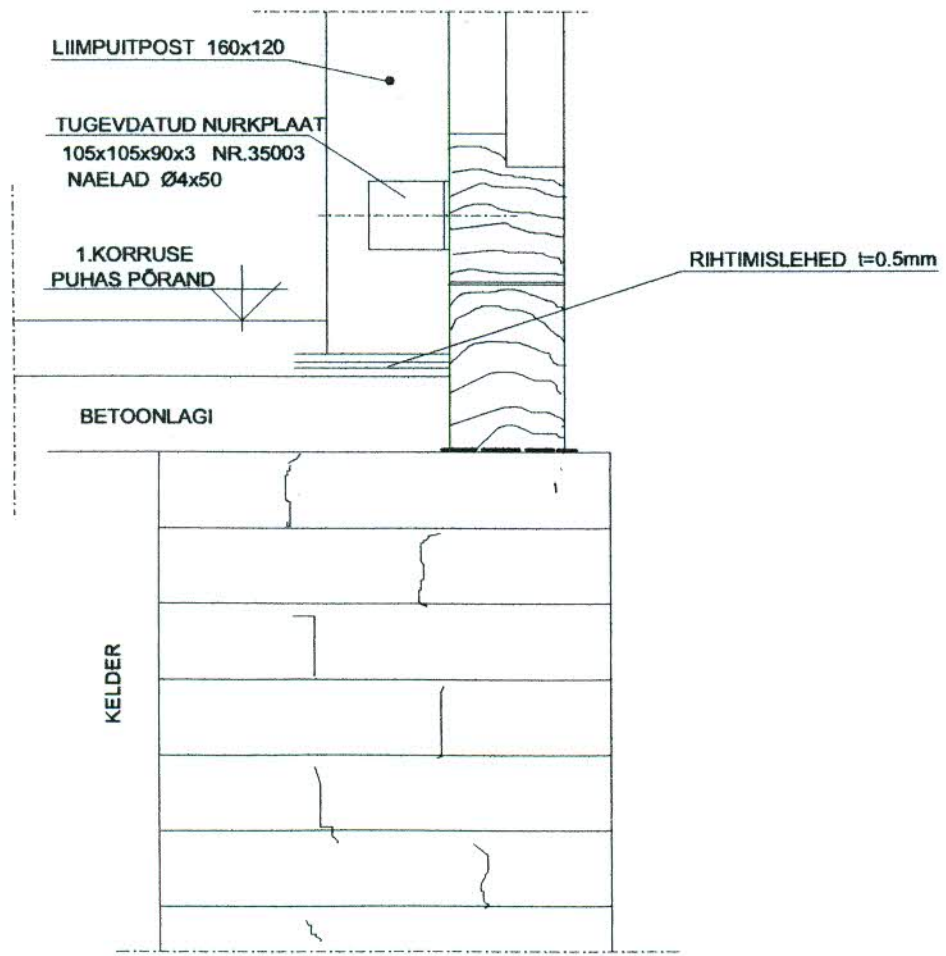
Handwritten signature

" 1 "

TALA TOETUS POSTILE (SEINA KÕRVAL)



" 1* "



M 1 : 10

" 2 "

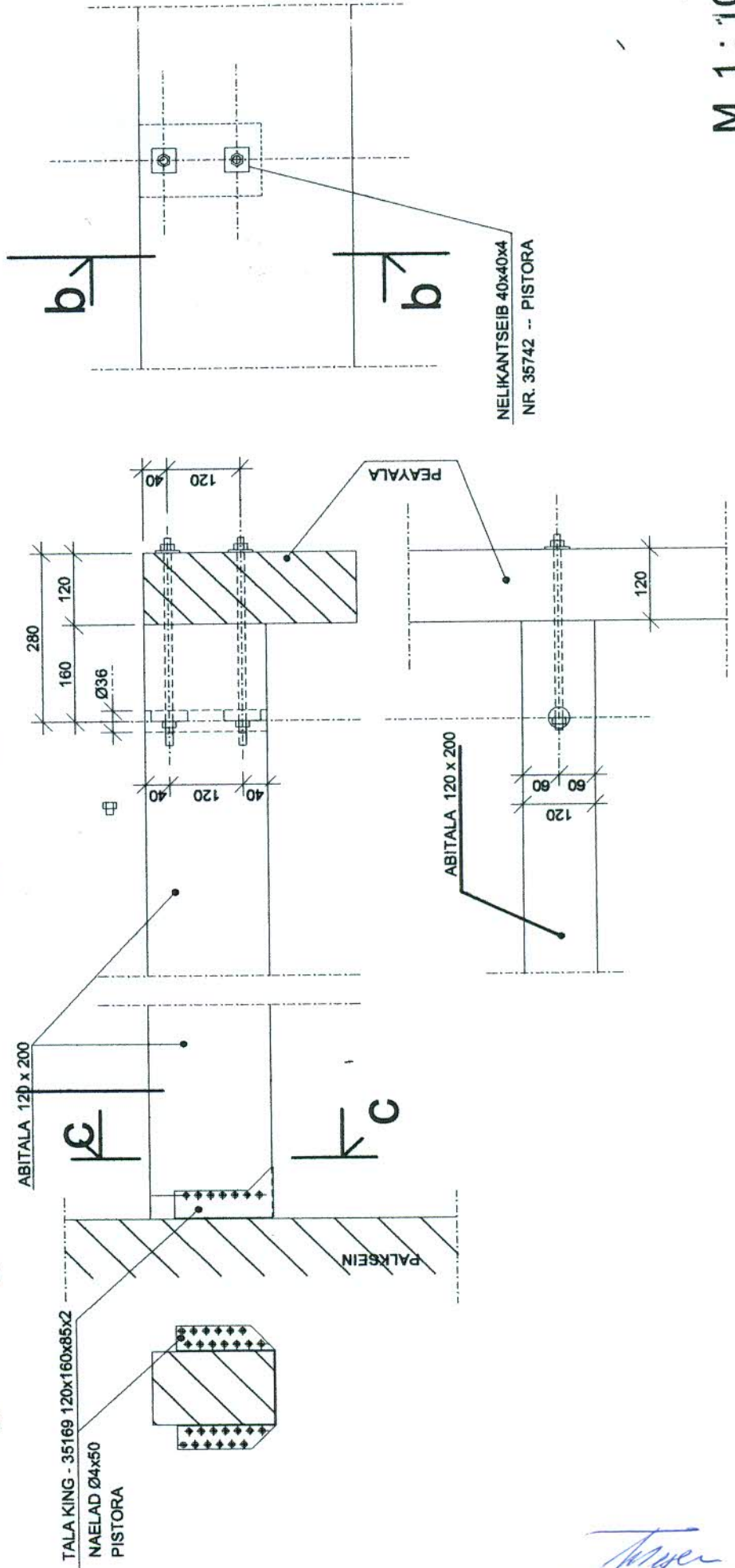
PEA- JA ABITALA ÜHENDUSSÕLM

" 3 "

ABITALA KINNITUS SEINALE

b - b

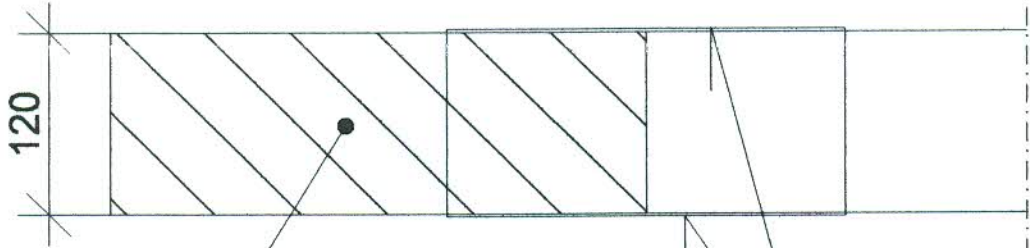
C - C



d - d

" 4 "

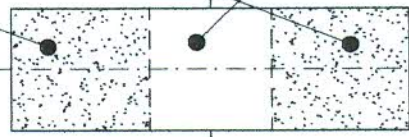
d



PEATALA 350x120

NAELUTUSALA

NAELAD Ø 4X40



90

40

40

90

NAELUTUSPLAAT 80x240x2 - 2TK

NR. 35088 - 2 TK.

ANKURNAELAD 35261- Ø4x50

d

POST 160X120

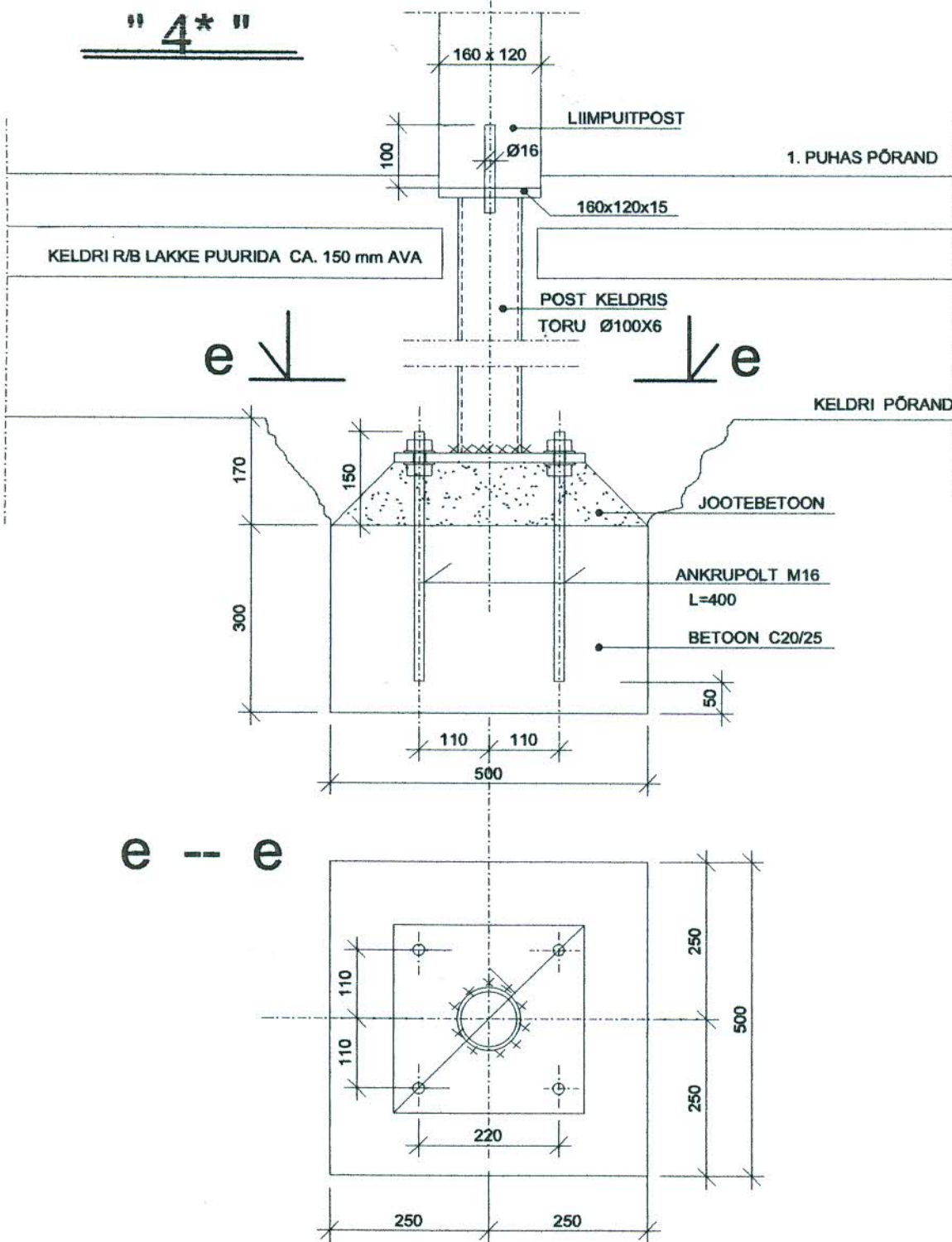
PEATALA TOETUS POSTILE

160 x 120

M 1:5

5

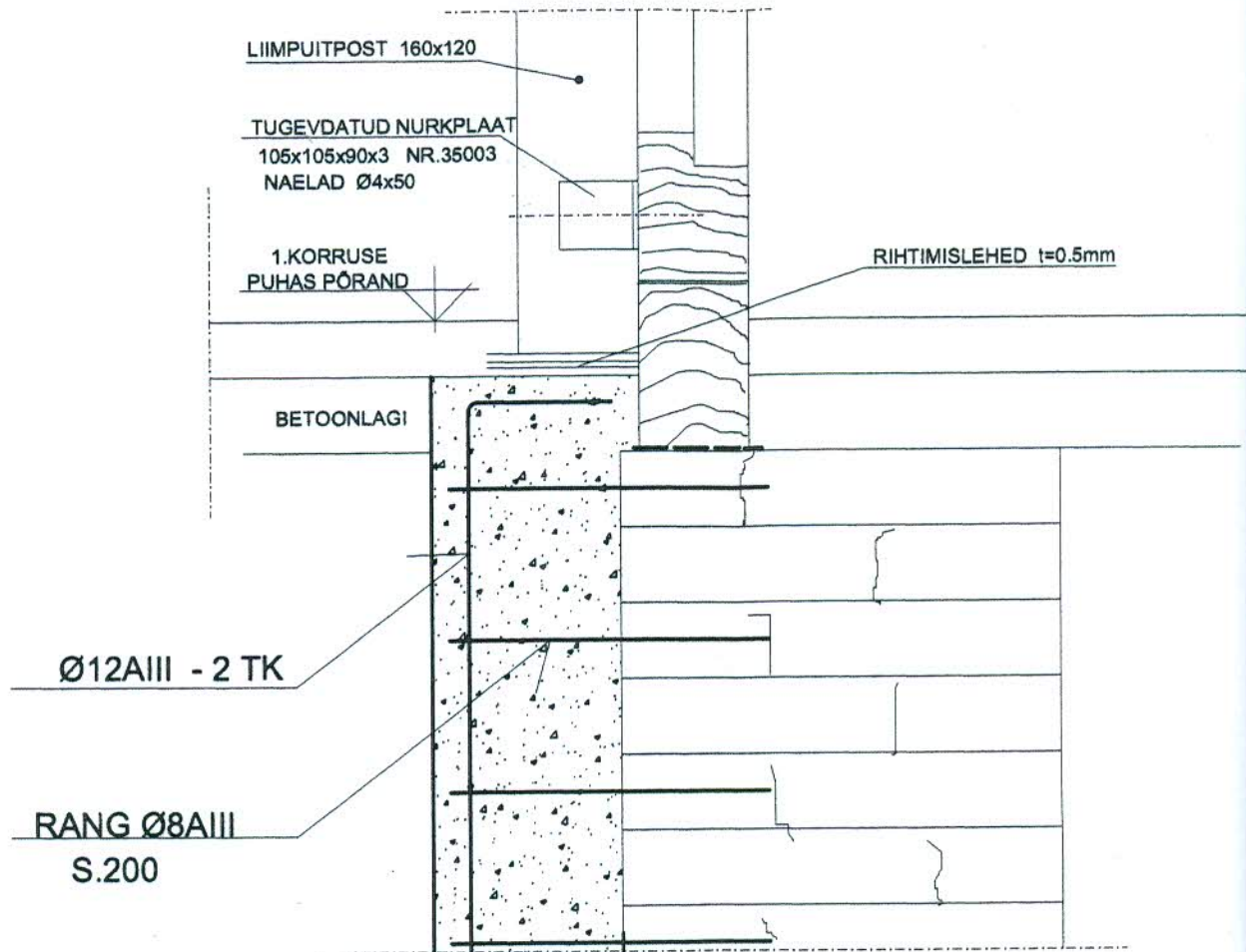
POSTID JA VUNDAMENT



Handwritten signature

M 1 : 10

" 5 "



UNDAMENDI LAIENDUS

f -- f

