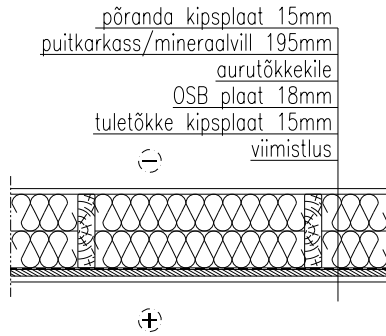
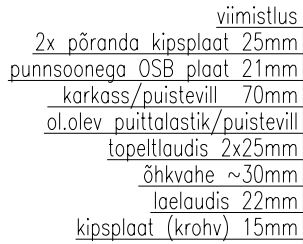
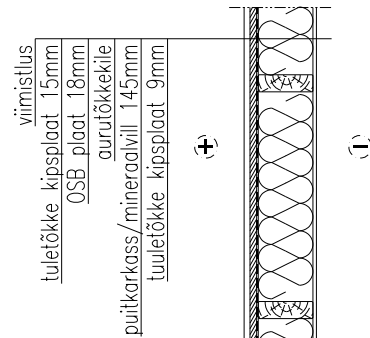


## VL - 5 Ventilatsioonikambri lagi

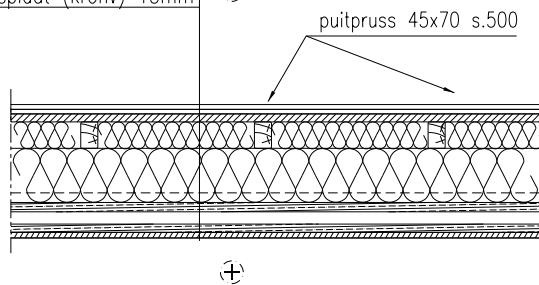


## SS-4 Ventilatsioonikambri sein

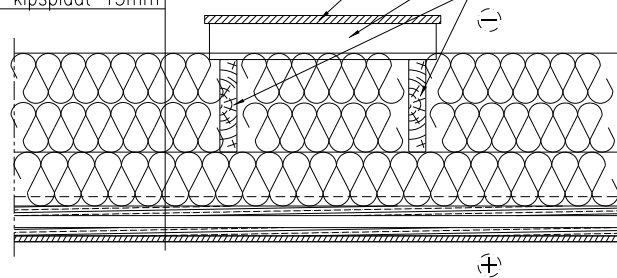
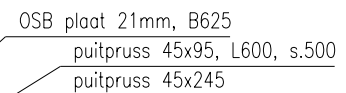
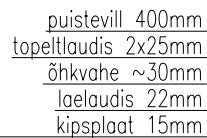
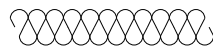


## Ventilatsioonikambri põrand

### VL - 4



## Käigutee pööningul



### MÄRKUSED:

- Üldise karkassivahelise soojustusena kasutada puiste kivivilla ( $\lambda_d \leq 0,041 \text{ W/mK}$ );
- Tuuletõkkeplaadina kasutada 50mm kivivillaplaati nt. Paroc Cortex ( $\lambda_d \leq 0,033 \text{ W/mK}$ );