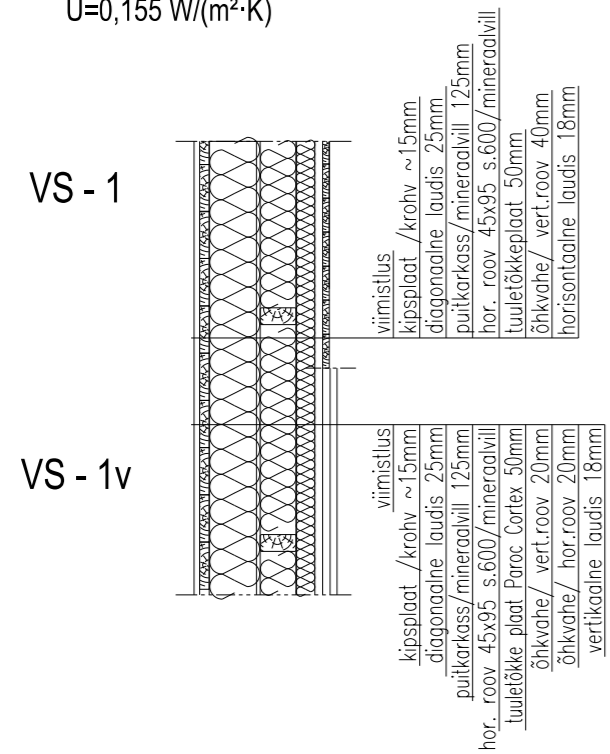
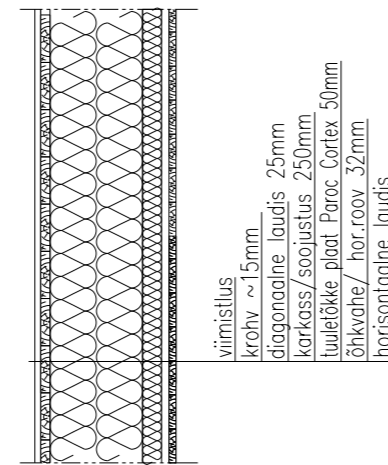


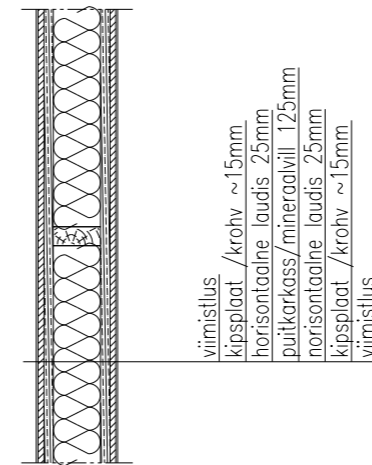
Projekteeritud välisseina lisasoojustamine
U=0,155 W/(m²·K)



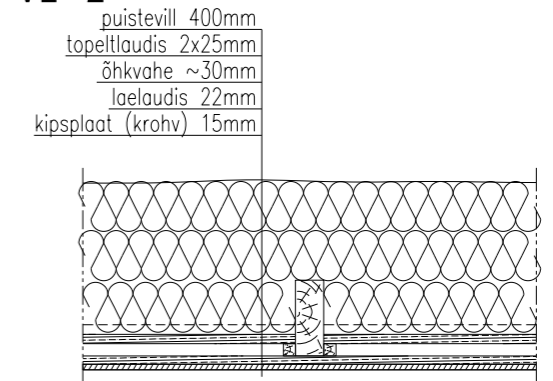
Projekteeritud juurdeehituse välissein
VS - 2



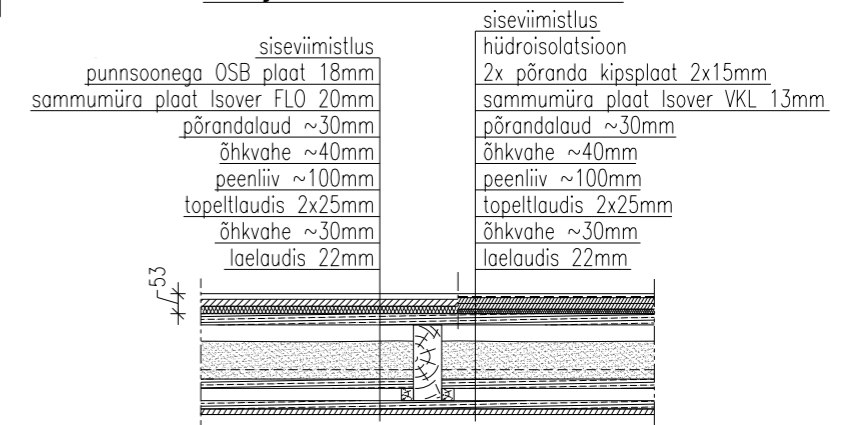
Projekteeritud ol.oleva vaheseina rek.
SS1 / SS2



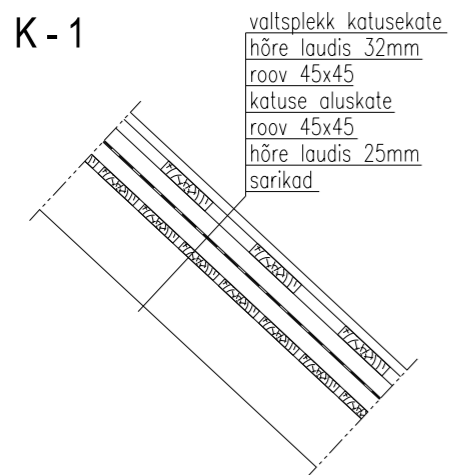
Projekteeritud 2k. lae lisasoojustamine
VL - 2 U=0,087 W/(m²·K)



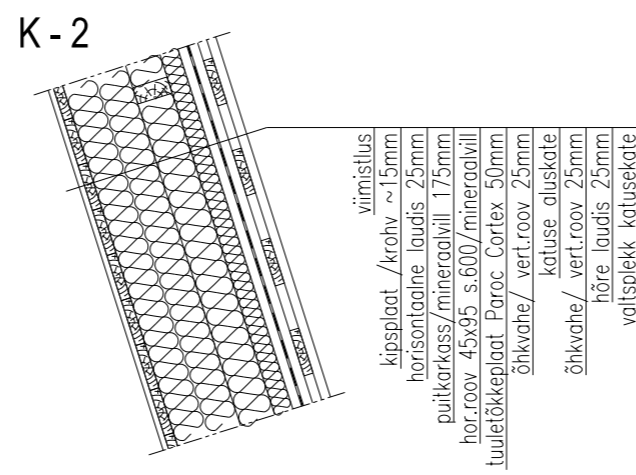
Projekteeritud vahelae rek. VL - 1



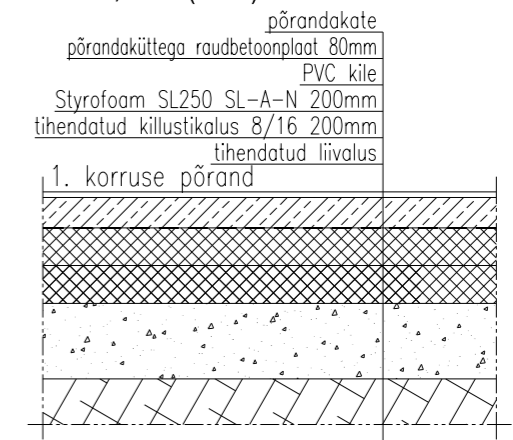
Projekteeritud katusekonstruktsiooni rek.
K - 1



Projekteeritud katuslae lisasoojustamine
K - 2



P - 1 Projekteeritud 1k. põrand rek.
U=0,12 W/(m²·K)



MÄRKUSED:

- Üldise karkassivahelise soojustusena kasutada puiste kivivilla ($\lambda_d \leq 0,041$ W/mK);
- Tuuletõkkeplaadina kasutada 50mm kivivillaplaati nt. Paroc Cortex ($\lambda_d \leq 0,033$ W/mK);
- Vahelae sammumüra plaadina kasutada nt. Isover FLO 20mm plaati;