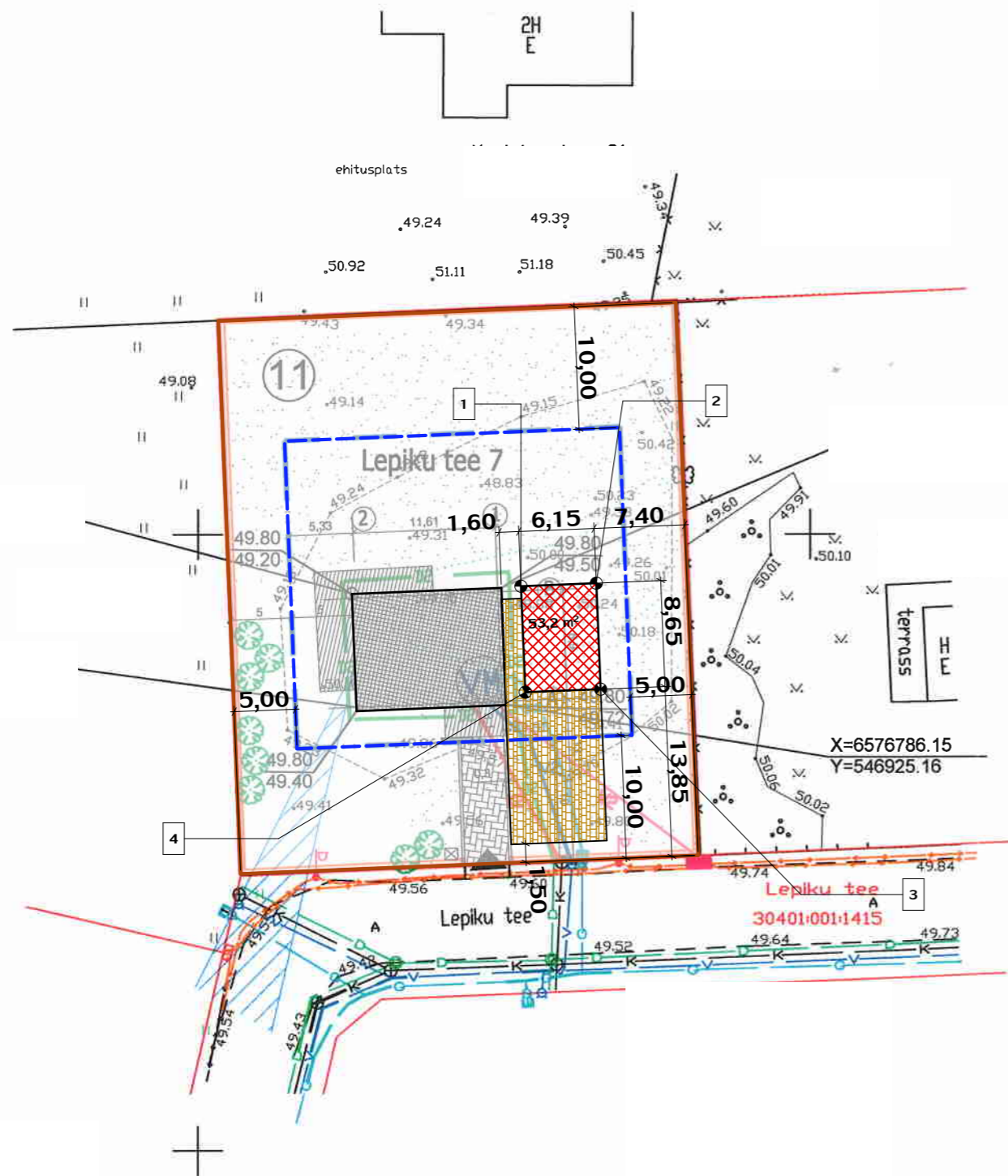


ASENDIPLAAN LEPIKU TEE 7 VAELA KÜLA, KIILI VALD



HOONE +0.000=50.10



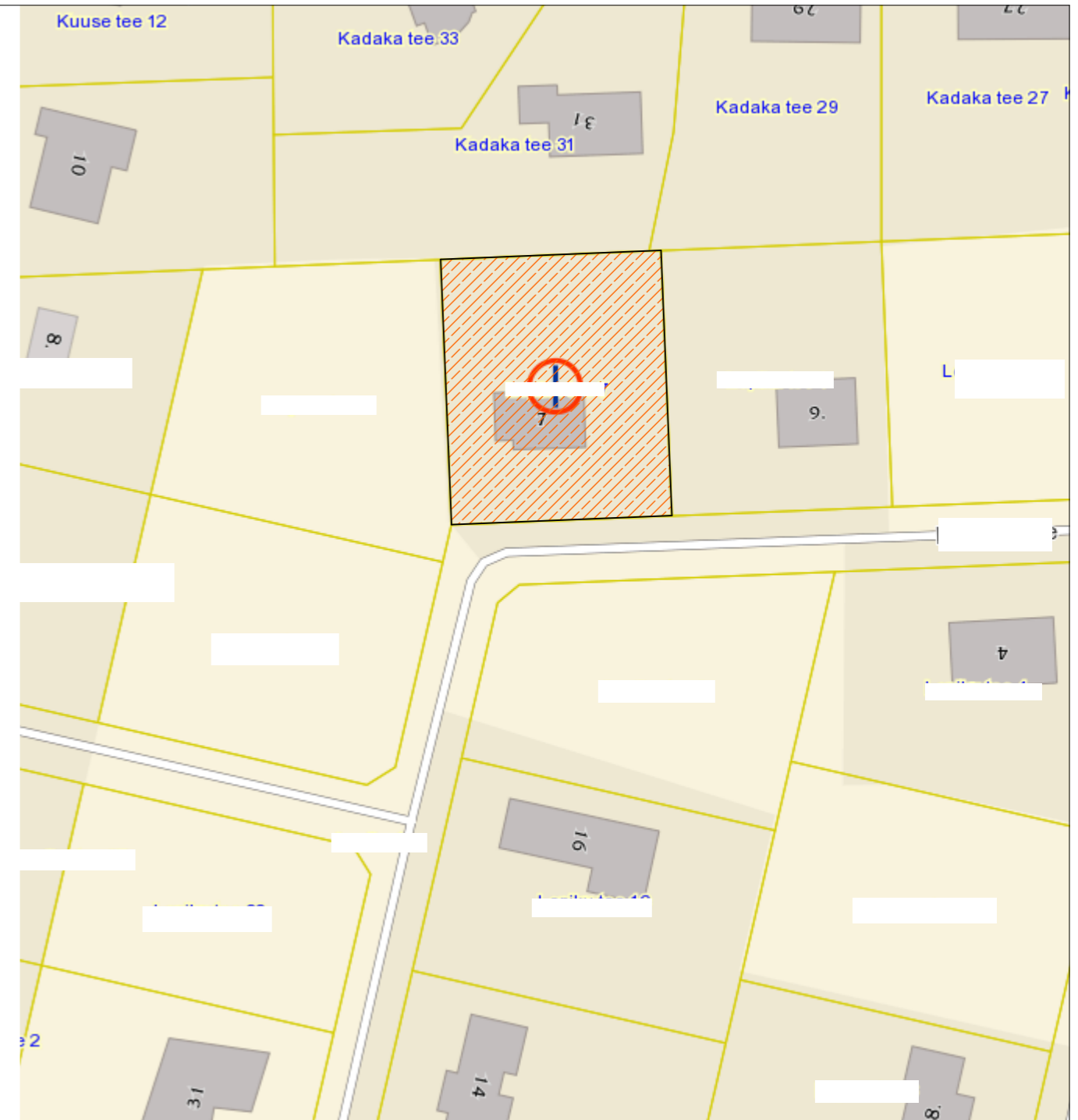
ASENDIPLAAN

1:500

- Projektis käsitletud kinnistu
- Ehitusala
- Projekteeritud abihoone
- Uus betoonkividega kaetud ala
- Ol.olev elamu

TEHNILISED NÄITAJAD:

Kasutusotstarve: 12744, Elamu, kooli vms abihoone
 Ehitisealune pind: 53,2 m²
 Suletud netopind: 45,9 m²
 Suletud brutopind: 53,2 m²
 Maht: 150 m³
 Gabariidid: 6,2 x 8,7 x 3,2 m
 Korruselisus: 1



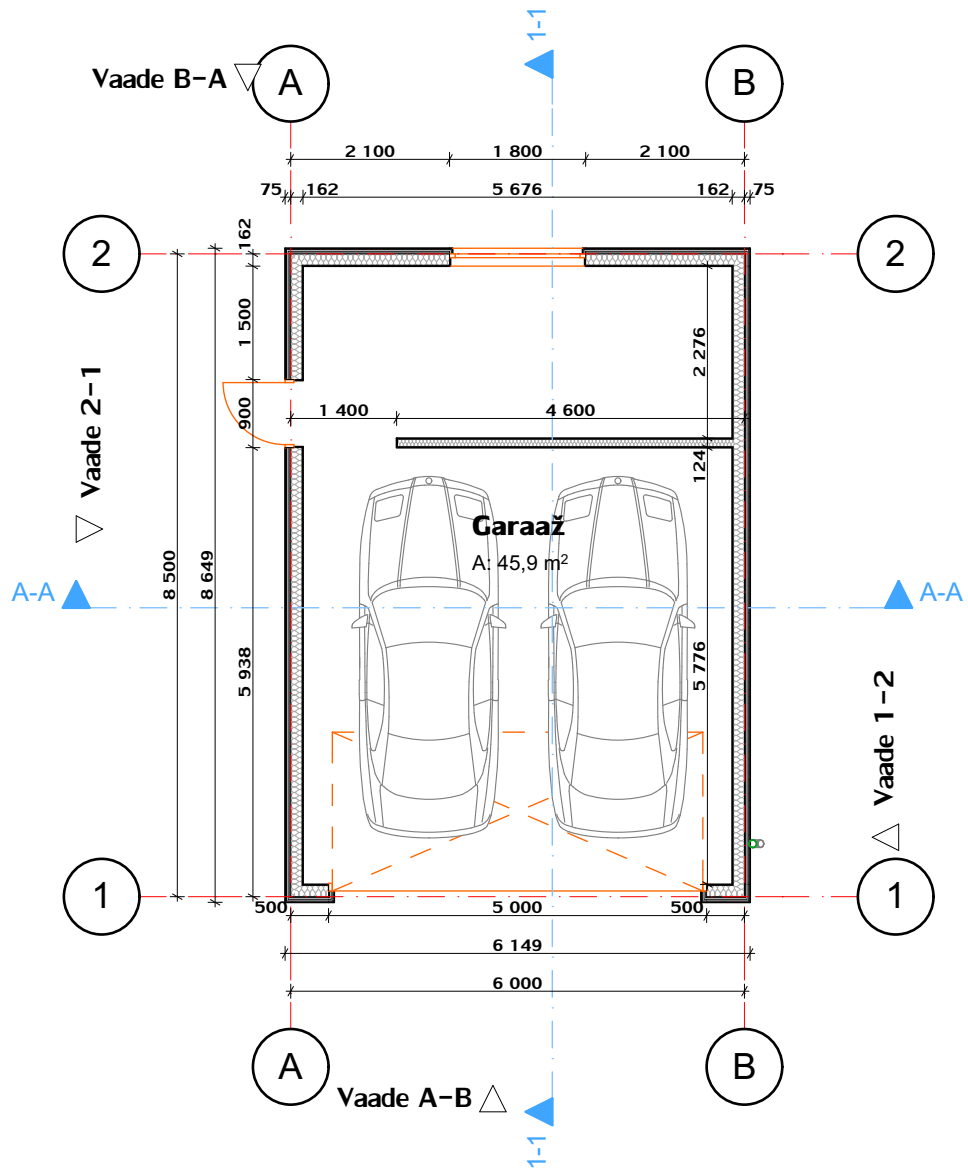
ASENDISKEEM

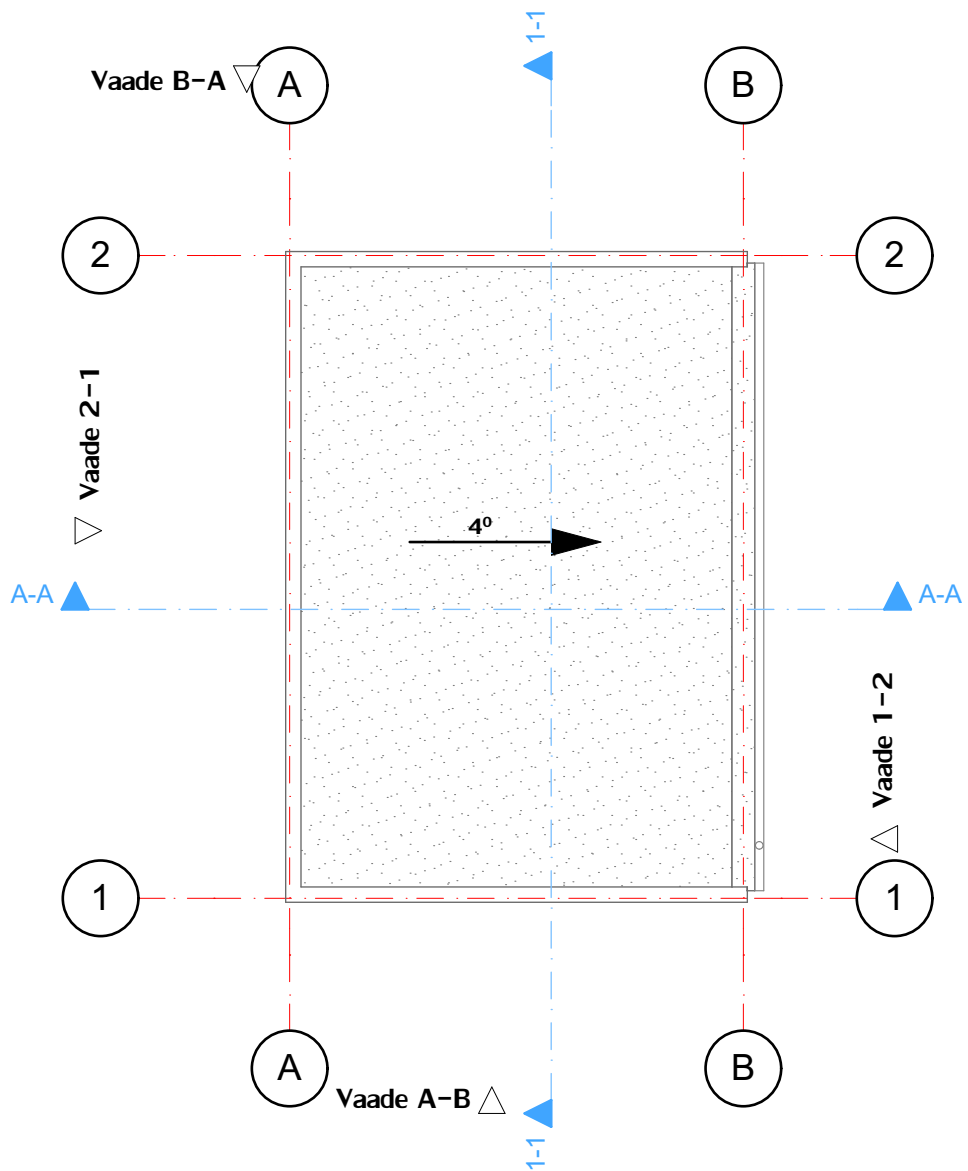
1:1000

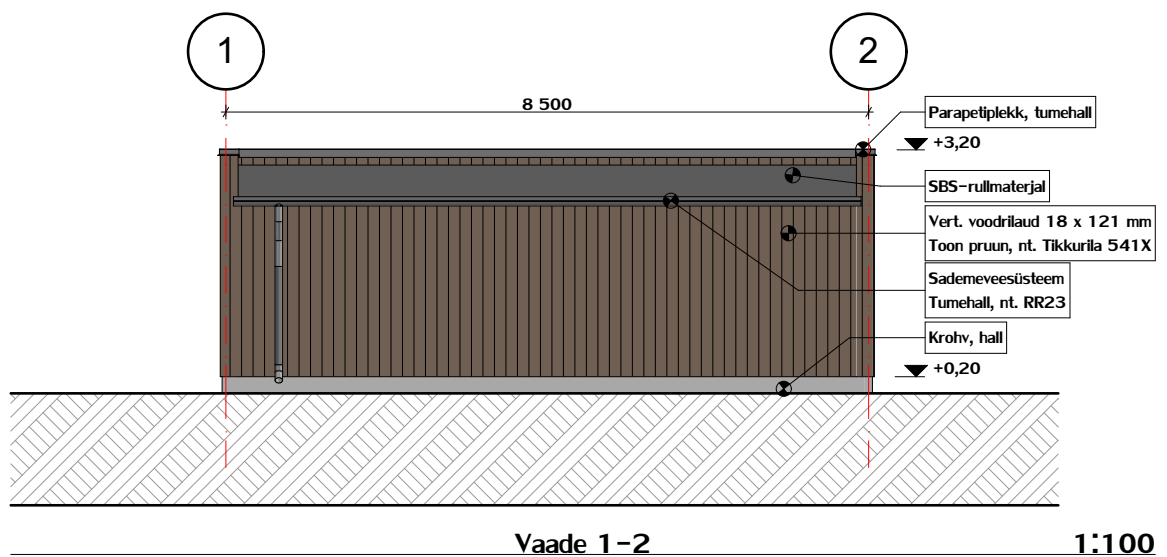
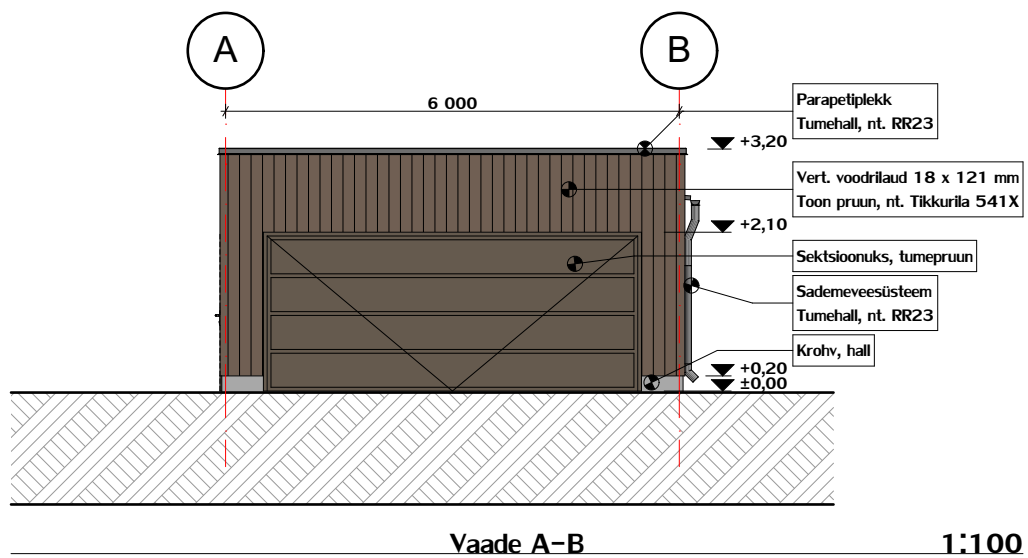
MÄRKUS: Asendiplaanil on aluseks võetud kinnistul asuva olemasoleva elamu ehitusprojekti asendiplaan.

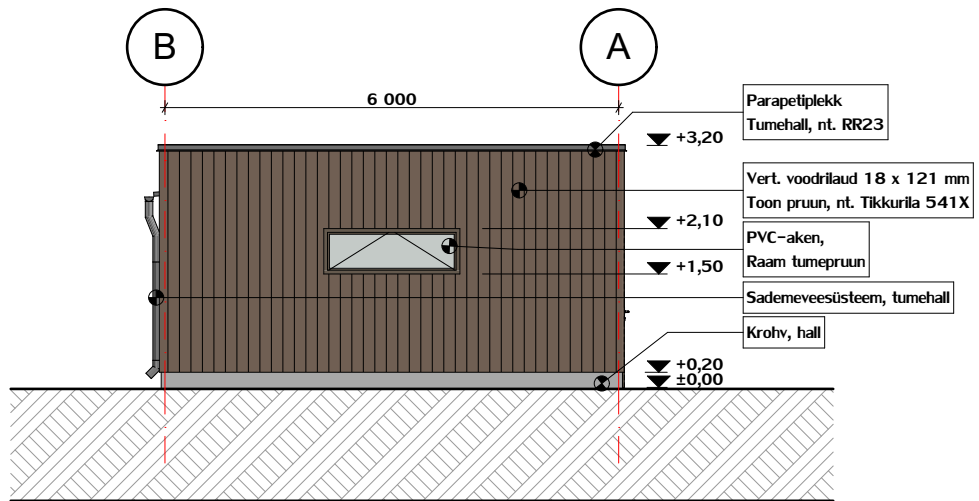
KOORDINAADID:		
POS	X	Y
1		
2		
3		
4		

30.06.2016



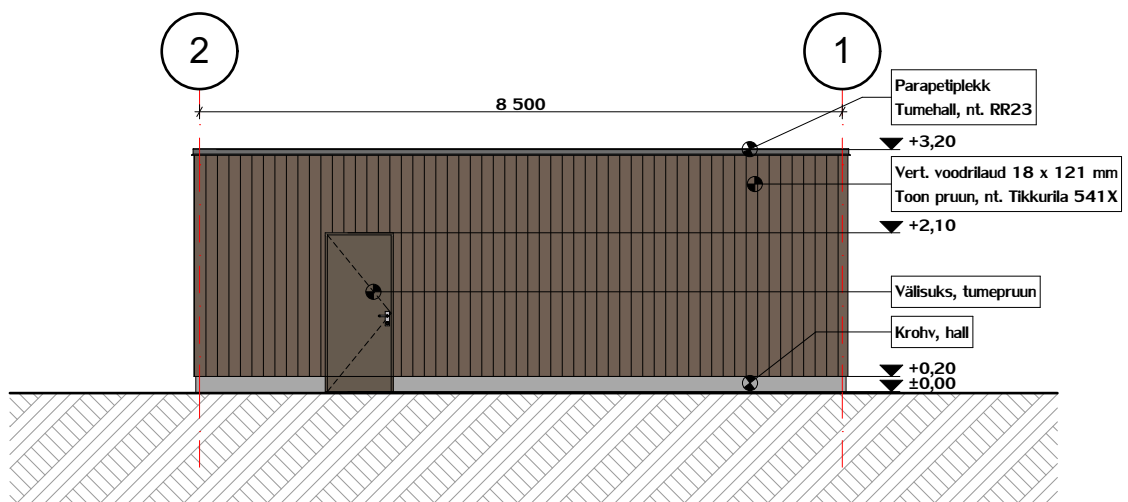






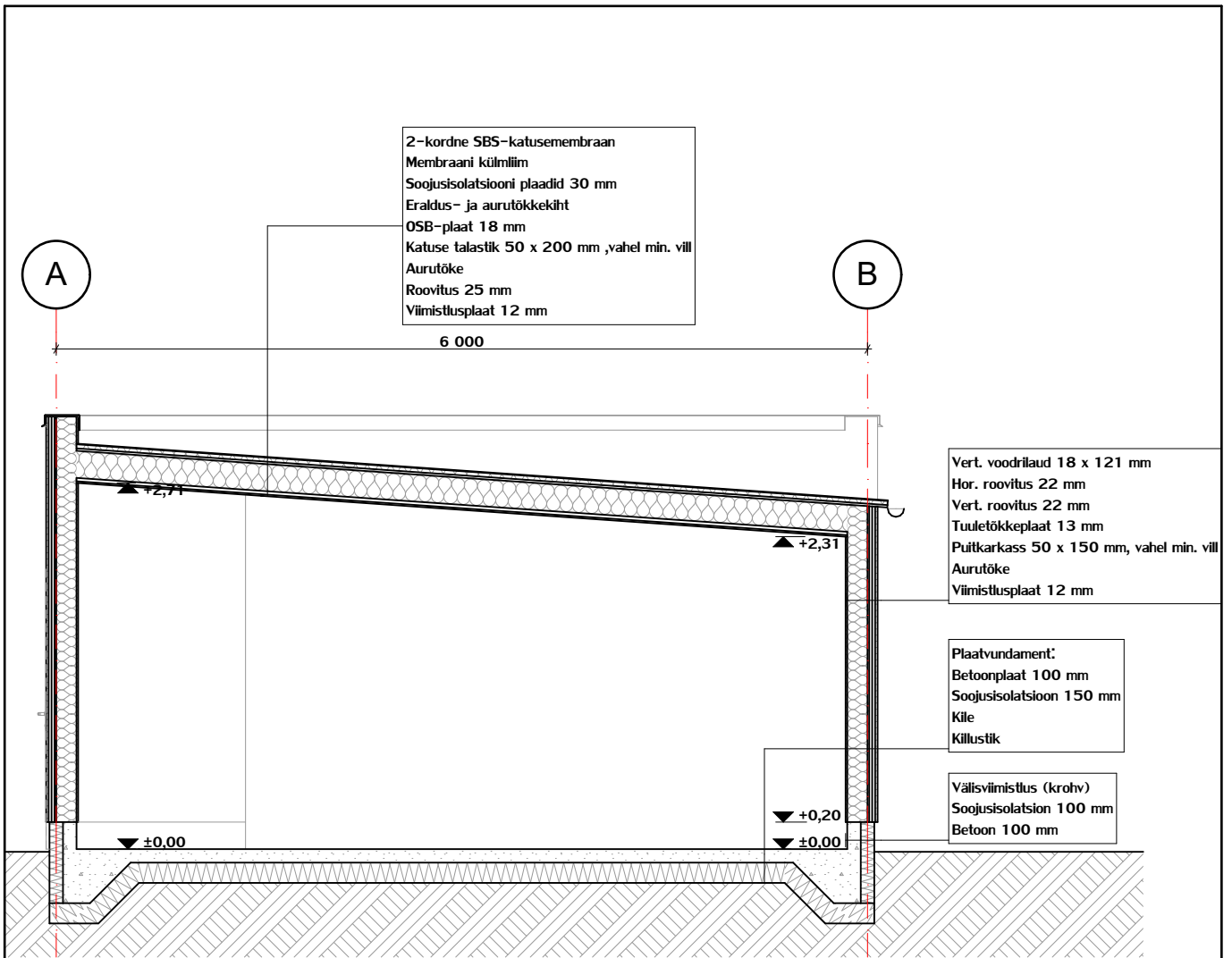
Vaade B-A

1:100



Vaade 2-1

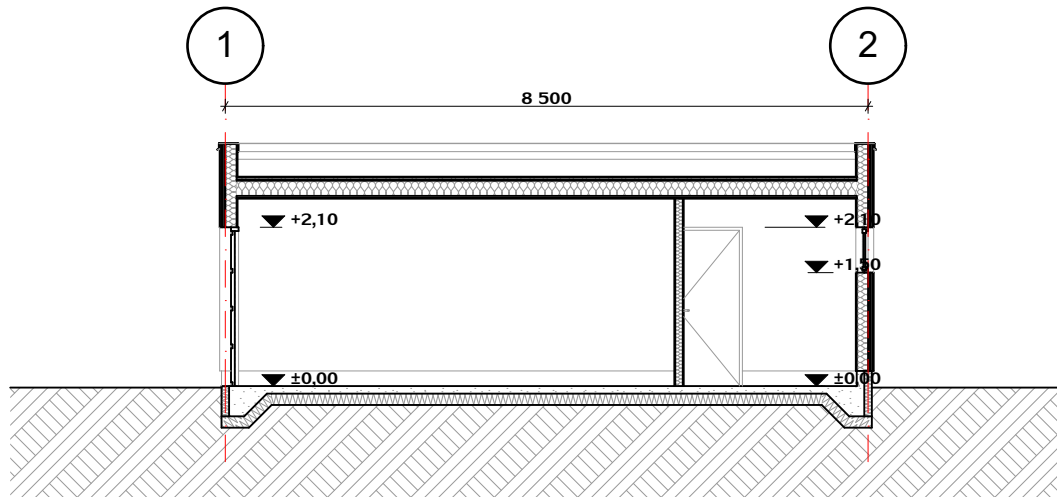
1:100



A-A

Lõige A-A

1:50



1-1

Lõige 1-1

1:100