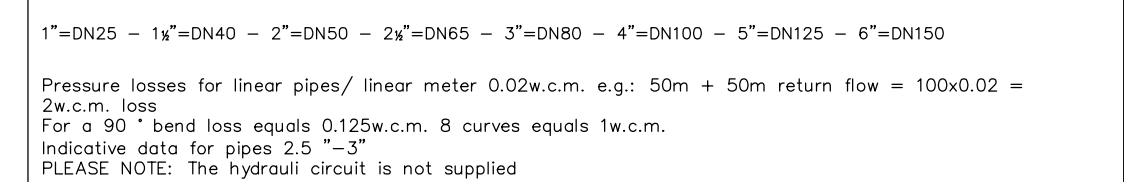


The copper rods ensure the earthing thanks to a connection with a cable or a flat. The earthing of the drying plant must be connected to the earth ring of the production site (factory) with a cable 50 mm². The ground (earth) of the feeding line of the kiln must be connected to ground (earth) of the drying chamber.



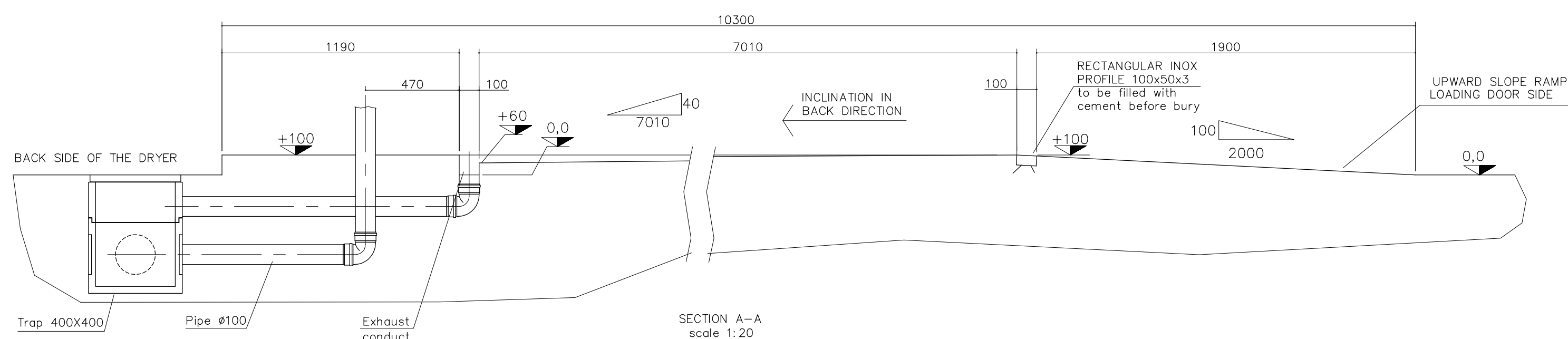
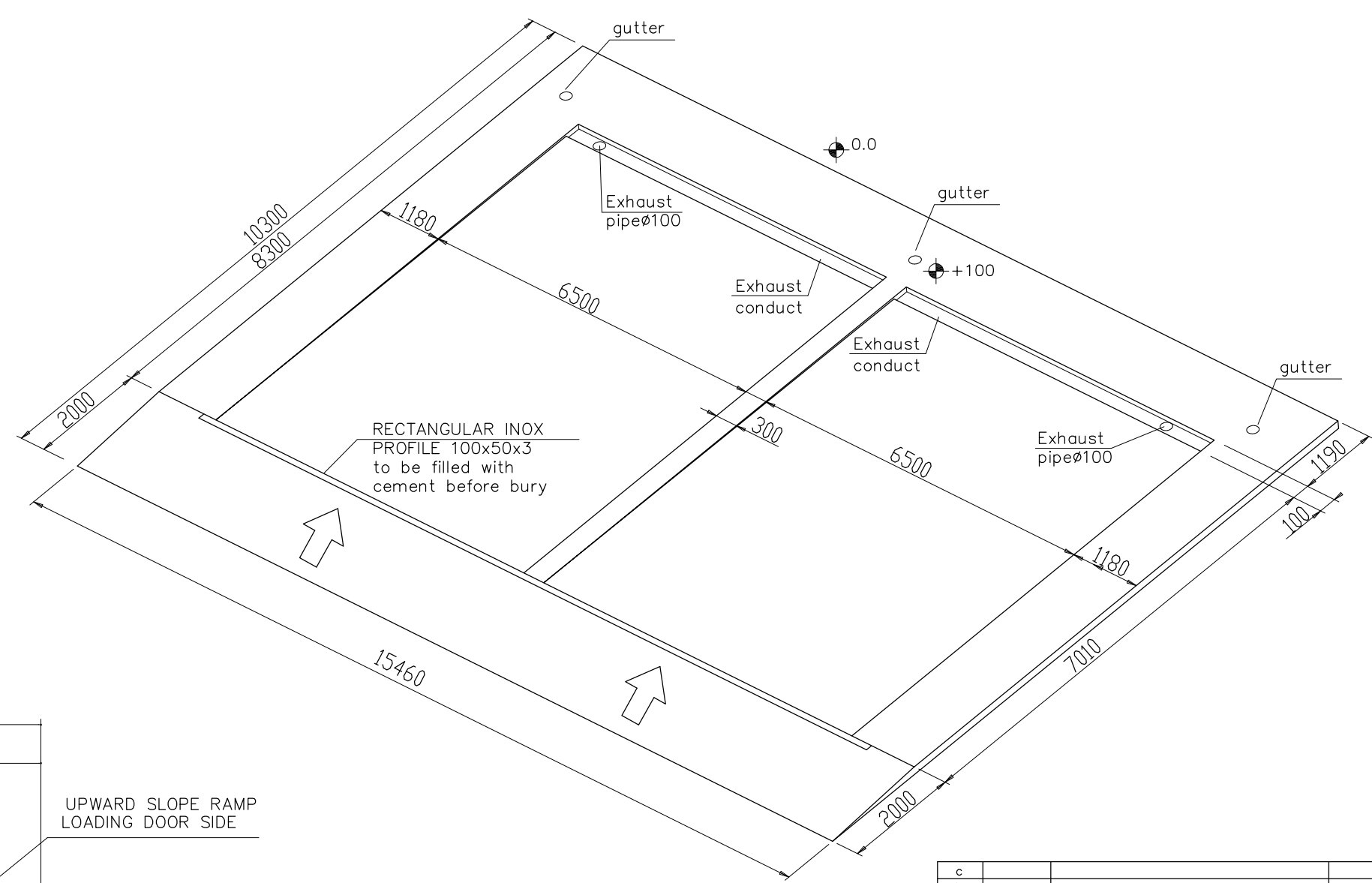
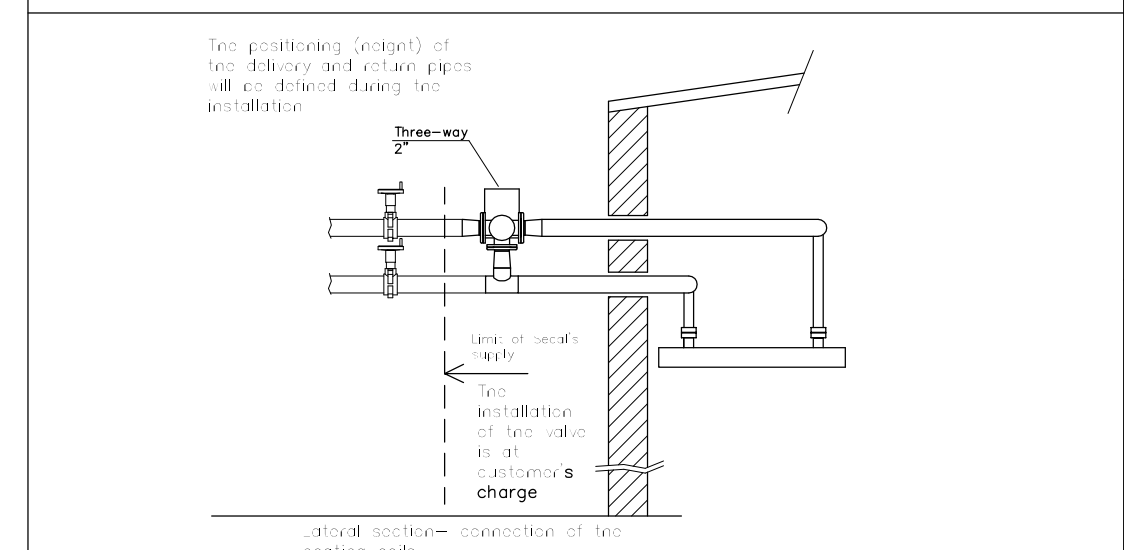
It is specifically recommended to install the pumps in line upright (vertical flow horizontal motor), that means with the flow arrow pointing up. It is not recommended to fix them horizontally (horizontal flow – engine horizontal) or flat (horizontal flow – vertical engine), as the pump is provided with special breather valves designed for this type of assembly. Crankcase and monoblock pumps are recommended for use in horizontal flat.

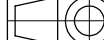
PLEASE NOTE: Bring a copper cable 4x16 mm², with length from 0 to 50m, OR a copper cable 4x25 mm², with length from 50 to 100m for power equal to 27 Kw. These are indicative data; a technical inspection on site would be requested for final check.

PLEASE NOTE: Bring a telephone cable network (for computer-informatics) in the technical room.

PLEASE NOTE: Bring a water tap for the spraying water in your control room (please check the water hardness and install a water softener if necessary).

The cable which is brought into the control room is used for all the chambers. The customer shall install a distribution board for supplying the chambers and for having the electricity (power) for the lighting of the technical rooms and of the grounding.



c									
b									
a									
mat.	data	Descrizione				DISEGNATORE		CONTROLLATO	APPROVATO
disegnatore	24/05/13		CONTROLLATO	APPROVATO		QUOTE SENZA TOLLERANZA FARE RIFERIMENTO ALLA UN ISO	SCALA	1:50	
data FIRMA		Cognome							
DENOMINAZIONE DISEGNO									
Foundation plan 2EPL 65.72.41									
DITTA COMMISSIONE									
AS AGROSILVA 2FAS4YOU OU			 SECAL ADVANCED DRYING TECHNOLOGY SECAL s.r.l. Via della Formica 81/83 - 31033 Montebelluna (TV) - ITALY Tel.: +39 0423 794161 - Telefax: +39 0423 794162 E-mail: info@secal.com - www.secal.com						
COMMEDIA 642.13/FAS			N° DIS. 6089		TAVOLA 1 / 4			IND. MOD.	